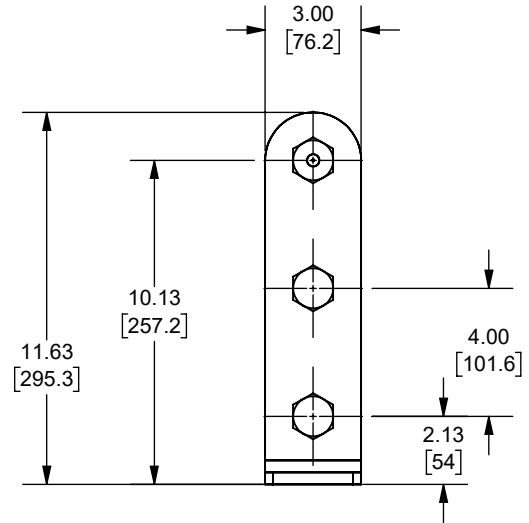
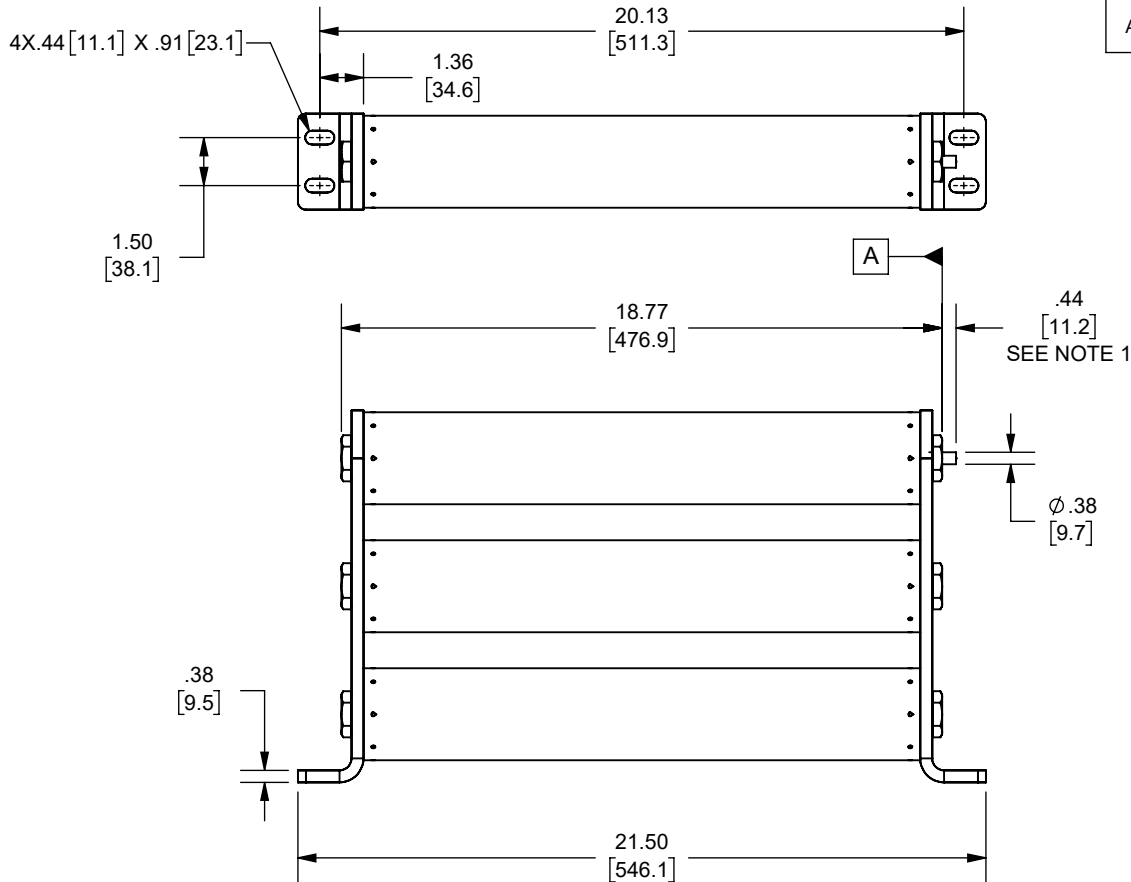


REV.	DATE	ECO	DESCRIPTION	BY	CK	APP
A	1/30/2024	18032	INITIAL RELEASE	YF	N/A	SEE ECO

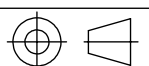


OUTLINE DIMENSIONS
NOT TO BE USED FOR PRODUCTION

DIMENSIONS IN []
ARE MILLIMETERS

NOTES:

- INDICATOR IS FLUSH WITH SURFACE **A** BEFORE FUSE OPENS INDICATOR EXTENDS .44 IN. [11.2mm] AFTER FUSE OPENS AND EXERTS AN 1 LBF AT THE END OF TRAVEL.

Approval stage / Etat d'approbation: APPROUVÉ POUR FABRICATION / APPROVED FOR MANUFACTURING		Product Class:/ Product Type: MEDIUM VOLTAGE X-RATED	
Initial ECO / ECO intiale: ECO-18032-000		Product amp rating:/ Voltage rating: 48X-57X 7.2kV	
Draw by / Dessiné par: Yadyra Fang	Date : 6/14/2024	Title / Titre: OUTLINE A072B3D0R0-(48,57)X	
Checked by / Vérifié par: Luis ARMENTA	Date : 6/14/2024	Drawing / de dessin: OUT-1211844	
Electrical Power 374 MERRIMAC STREET NEWBURYPORT, MA 01950	Éch / Scale : 1:6 Format / Size : A	Part / Article: SEE TABLE	Page : 1/1
A072B3D0R0-57X A072B3D0R0-48X CATALOG NUMBER		MERSEN Weight : Masse :  Rev : A Rév :	

Ce plan strictement confidentiel est la propriété exclusive de la société MERSEN sans l'autorisation écrite de laquelle il ne peut être ni reproduit, ni copié, ni communiqué à des tiers.
This drawing and specifications there on is property of MERSEN and shall not be reproduced or copied or used in whole or in part as the base for manufacture or sale of item without written permission.