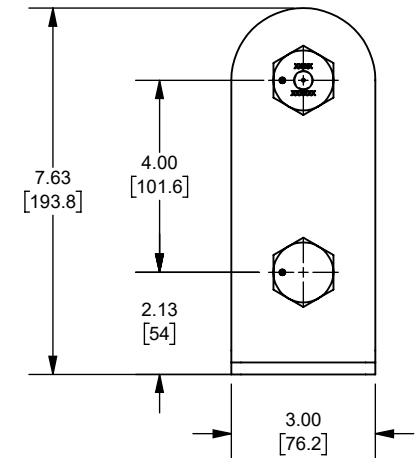
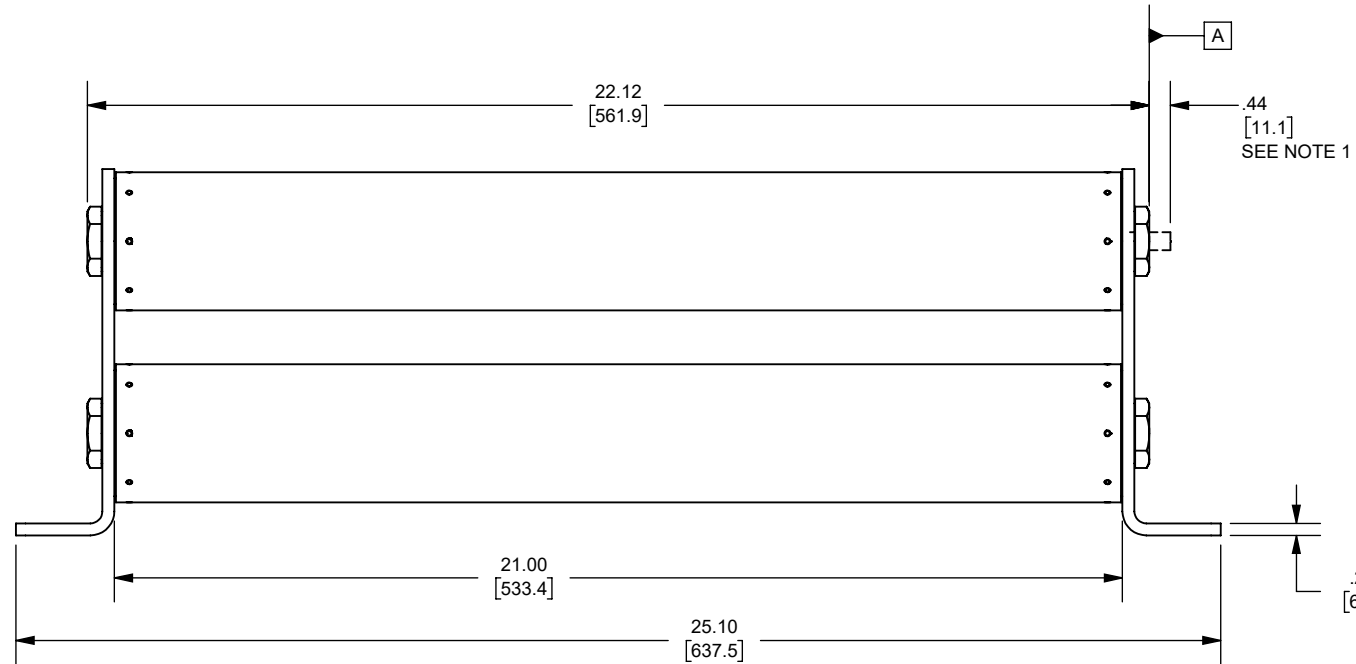
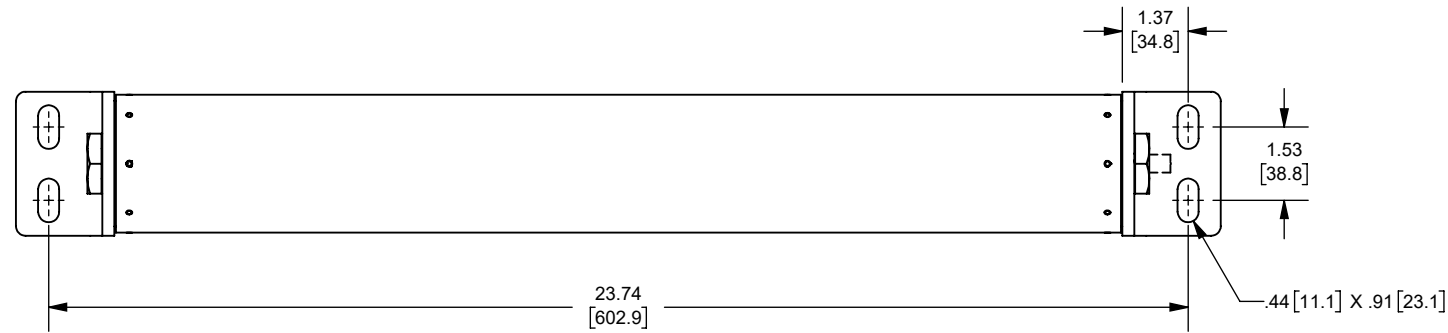


NOTES

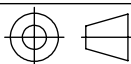

- INDICATOR IS FLUSH WITH SURFACE **A** BEFORE FUSE OPENS  
INDICATOR EXTENDS .44 IN. [11.2mm] AFTER FUSE OPENS AND EXERTS  
1 LBF AT THE END OF TRAVEL

REV.	DATE	ECO	DESCRIPTION	BY	CK	APP
A	5/10/2022	16903	INITIAL RELEASE	KMH	N/A	SEE ECO



OUTLINE DIMENSIONS  
NOT TO BE USED FOR PRODUCTION

DIMENSIONS IN [ ]  
ARE MILLIMETERS

Approval stage / Etat d'approbation: <b>APPROUVÉ POUR FABRICATION / APPROVED FOR MANUFACTURING</b>	Product Class:/ Product Type: <b>E-RATED BOLT-IN AMP-TRAP</b>	Title / Titre: <b>A155B2D0R0-125E</b>		Weight : Masse : <b>14663</b>
Initial ECO / ECO initiale: <b>ECO-16903-000</b>	Product amp rating:/ Voltage rating: <b>125E 15.5kV</b>	MEDIUM VOLTAGE		
Draw by / Dessiné par: <b>Alma Balcazar</b>	Date : <b>9/7/2022</b>	Drawing / de dessin: <b>OUT-1202996</b>		
Checked by / Vérifié par: <b>Yadyra Fang</b>	Date : <b>9/7/2022</b>	Part / Article: <b>SEE TABLE</b>		Rev : Rév : <b>A</b>
Electrical Power 374 MERRIMAC STREET NEWBURYPORT, MA 01950	Éch / Scale : <b>1:4</b> Format / Size : <b>B</b>	Page : <b>1/1</b>		

Ce plan strictement confidentiel est la propriété exclusive de la société MERSEN sans l'autorisation écrite de laquelle il ne peut être ni reproduit, ni copié, ni communiqué à des tiers.  
This drawing and specifications there on is property of MERSEN and shall not be reproduced or copied or used in whole or in part as the base for manufacture or sale of item without written permission.

A155B2D0R0-125E  
CATALOG NUMBER