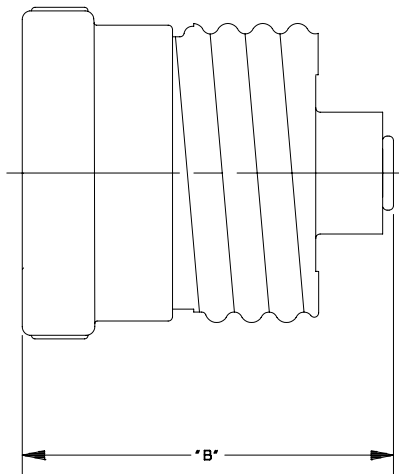
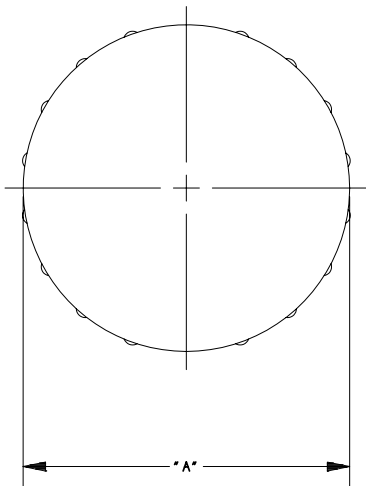


REV	DATE	ECO	DESCRIPTION	BY	CK	APP
-	7/13/11	NA	INITIAL RELEASE	GDR		(SEE ECO)



GW20	Ø1.151 [±29.2mm]	1.29 [±32.7mm]
GW(3-15,25-30)	Ø1.126 [±28.6mm]	1.29 [±32.7mm]
PART NO.	DIM.- "A"	DIM.- "B"



MERSEN USA NEWBURYPORT-MA. LLC
 374 MERRIMAC STREET
 NEWBURYPORT, MA 01950

PRODUCT MANAGER

DESIGN ENGINEER

SIGN:
DATE:

SIGN:
DATE:

NON-TIME DELAY

GW(3-30)

3-30A 125VAC

OUTLINE DIMENSIONS
NOT TO BE USED FOR PRODUCTION

701771