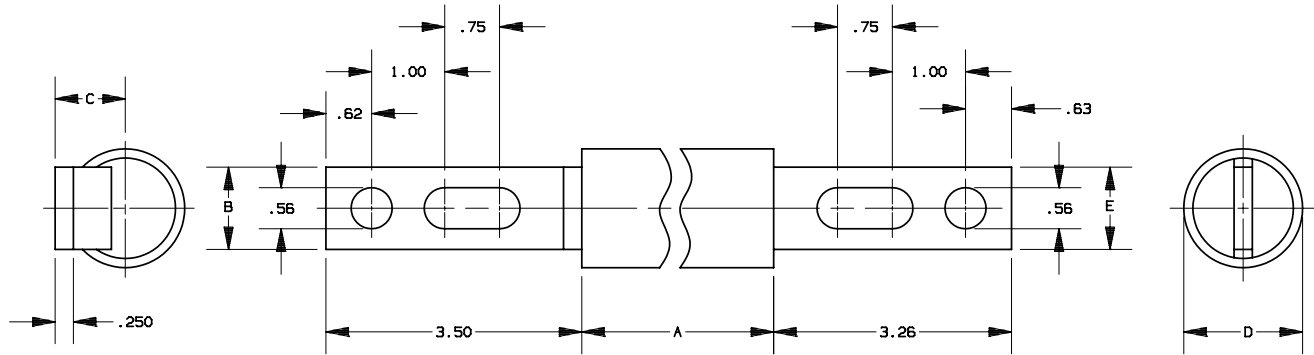


REV	DATE	ECO	DESCRIPTION	BY	CK	APP
D	4-21-09	N/A	ADDED CP2/OC5, DIM. 3.26 WAS 3.50, DIM .63 WAS .62	LDB	N/A	N/A



* FOR COPPER CABLE

CATALOG NO.	CATALOG NO.	CABLE SIZE *	A	B	C	D	E DIA
CP2/OC5		2/0	3.62	1.12	.96	1.44	1.12
CP4/OC5	CPH4/OC5	4/0	3.62	1.12	.96	1.44	1.12
CP250C5	CPH250C5	250MCM	3.62	1.12	.96	1.44	1.12
CP350C5	CPH350C5	350MCM	3.62	1.62	.96	1.44	1.12
CP400C5	CPH400C5	400MCM	3.62	1.62	.96	1.62	1.12
CP500C5	CPH500C5	500MCM	3.62	1.62	1.19	1.88	1.50
CP600C5	CPH600C5	600MCM	3.75	2.00	1.31	2.50	2.00
CP750C5	CPH750C5	750MCM	3.75	2.00	1.31	2.50	2.00

NOTES:

FOR HEAT SHRINKABLE TUBING ADD HS TO CATALOG NO, EXAMPLE CP350C5-HS
TERMINALS-PLATED



MERSEN USA NEWBURYPORT-MA, LLC
374 MERRIMAC STREET
NEWBURYPORT, MA 01950

PRODUCT MANAGER

DESIGN ENGINEER

SIGN:
DATE:

SIGN:
DATE:

CABLE PROTECTOR
600 VOLT
CP(H)(2/0-750)C5

OUTLINE DIMENSIONS
NOT TO BE USED FOR PRODUCTION

17788