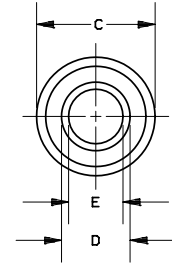
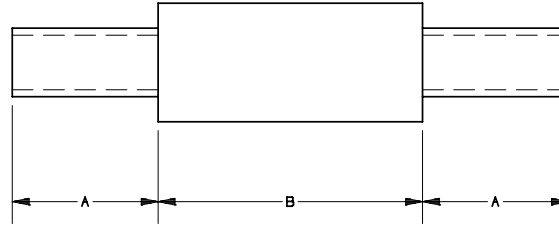
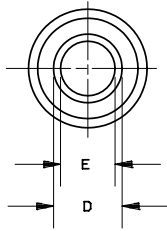
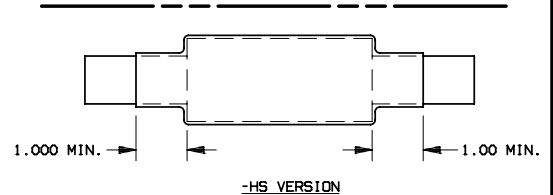


REV	DATE	ECO	DESCRIPTION	BY	CHK	APP
K	2-14-08	N/A	REMOVED 6CL500C, CP500C1(-HS)	LDB	N/A	N/A



\* FOR COPPER CABLE

CATALOG NO.	CATALOG NO.	CATALOG NO.	CABLE SIZE *	A	B	C DIA	D DIA	E DIA
	CP2C1		#2	1.75	3.62	1.44	.42	.31
	CP1/0C1		1/0	1.75	3.62	1.44	.52	.39
	CP2/0C1		2/0	1.75	3.62	1.44	.56	.44
	CP4/0C1	CPH4/0C1	4/0	1.75	3.62	1.44	.68	.55
	CP250C1	CPH250C1	250MCM	1.88	3.62	1.44	.75	.62
	CP350C1	CPH350C1	350MCM	2.00	3.62	1.62	.88	.71
	CP400C1		400MCM	2.00	3.62	1.62	.94	.75
<del>6CL500CC</del>	<del>CP500C1</del>	CPH500C1	500MCM	2.88	3.62	1.88	1.05	.82
	CP600C1	CPH600C1	600MCM	2.88	3.75	2.50	1.07	.94
	CP750C1	CPH750C1	750MCM	2.88	3.75	2.50	1.32	1.06
	CP1000C1		1000MCM	3.13	3.75	3.00	1.50	1.16



NOTES:

FOR HEAT SHRINKABLE TUBING ADD HS TO CATALOG NO. EXAMPLE CP350C1-HS



MERSEN USA NEWBURYPORT-MA, LLC  
374 MERRIMAC STREET  
NEWBURYPORT, MA 01950

CP(H)(2-1000)C1(-HS)

OUTLINE DIMENSIONS  
NOT TO BE USED FOR PRODUCTION

PRODUCT MANAGER

DESIGN ENGINEER

CABLE PROTECTOR

600 VOLT

17514

SIGN:  
DATE:

SIGN:  
DATE: