

# Protistor® size 121 gR

750VDC (IEC)

## SEMICONDUCTOR PROTECTION FUSES

## SQUARE BODY HIGH-SPEED FUSE-LINKS DC PROTECTION



Mersen DC offers provide a very high performant protection for railway power and auxiliary circuits. Mersen DC Semiconductor fuse-links were developed to provide improved performance required by today's new DC equipment. These fuse-links are typically operated at more elevated temperature than other fuse type, have lower  $I^2t$  to minimize damage to protected components on short circuits, lower watts loss and longer life.

### TECHNICAL DATA OVERVIEW

Ampere Range (A)	200 ... 250 A
Speed/Characteristic	gR
Product Size	121
Rated Voltage DC (IEC)	750 VDC

### FEATURES & BENEFITS

- Multiple body sizes and terminals or blades combination
- Very low  $I^2t$
- Extremely fast acting
- Eliminate all overloads
- Excellent cycling capability

### APPLICATIONS

- Protection of inverters
- Protection of motor drives
- Protection of UPS systems
- Railway power and auxiliary circuits
- Similar 750VDC or less equipments

### STANDARDS

- IEC 60269-4 Compliance

MERSEN reserves the right to change, update or correct, without notice, any information contained in this datasheet.

# Protistor® size 121 gR

## 750VDC (IEC)

### PRODUCT RANGE



D121GC75V250EF

#### Size 121 gR 750VDC type EF, blade contacts with striker

Catalog number	Item number	Rated voltage DC (IEC)	Rated current I <sub>n</sub>	Pre-arcing I <sup>2</sup> t	Rated breaking capacity DC	Max. I <sup>2</sup> t @900V, L/R=40ms, IP=50I <sub>n</sub>	Max. I <sup>2</sup> t @900V, L/R=40ms, IP=10I <sub>n</sub>	Power dissipation at I <sub>n</sub>	Power dissipation at 0.8 I <sub>n</sub>	Weight
D121GC75V200EF	A086710	750 V	200 A	11.85 kA <sup>2</sup> s	100 kA	150 kA <sup>2</sup> s	755 kA <sup>2</sup> s	37.5 W	20.5 W	1.02 kg
D121GC75V250EF	M085203	750 V	250 A	18.05 kA <sup>2</sup> s	100 kA	250 kA <sup>2</sup> s	1250 kA <sup>2</sup> s	46.7 W	25.5 W	1.02 kg

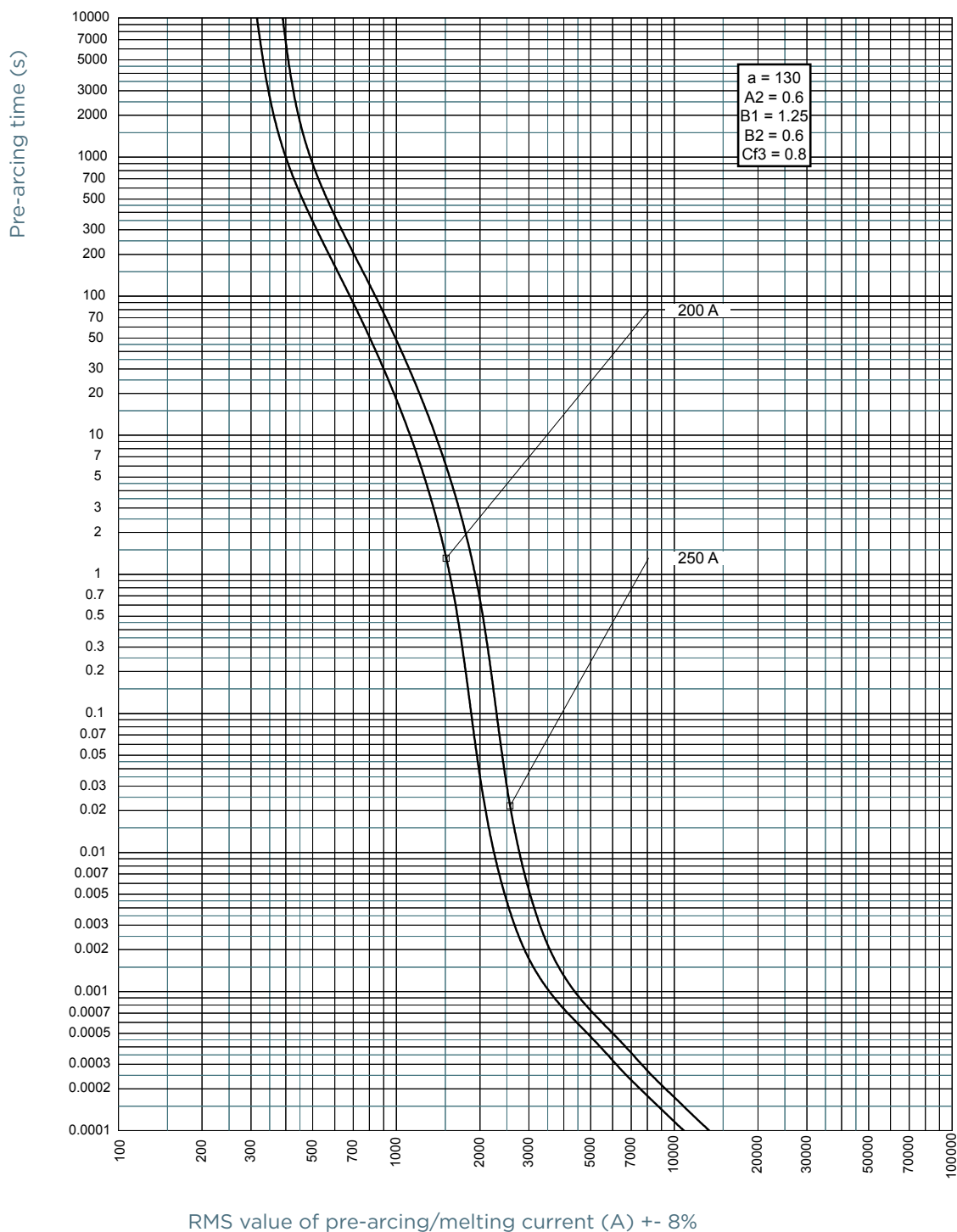


D121GC75V200TF

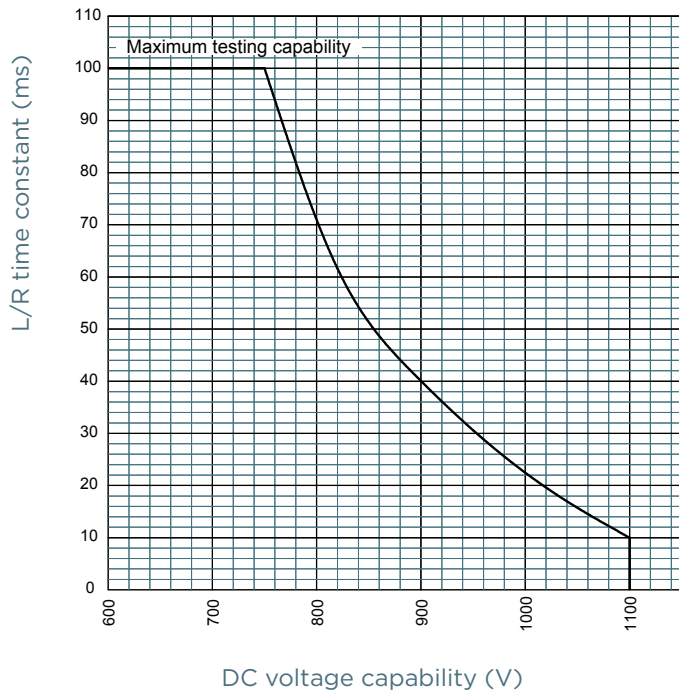
#### Size 121 gR 750VDC type TTF, threads terminals with striker

Catalog number	Item number	Rated voltage DC (IEC)	Rated current I <sub>n</sub>	Pre-arcing I <sup>2</sup> t	Rated breaking capacity DC	Max. I <sup>2</sup> t @900V, L/R=40ms, IP=50I <sub>n</sub>	Max. I <sup>2</sup> t @900V, L/R=40ms, IP=10I <sub>n</sub>	Power dissipation at I <sub>n</sub>	Power dissipation at 0.8 I <sub>n</sub>	Weight
D121GC75V200TF	N085250	750 V	200 A	11.85 kA <sup>2</sup> s	100 kA	150 kA <sup>2</sup> s	755 kA <sup>2</sup> s	37.5 W	20.5 W	0.88 kg
D121GC75V250TF	Q085252	750 V	250 A	18.05 kA <sup>2</sup> s	100 kA	250 kA <sup>2</sup> s	1250 kA <sup>2</sup> s	46.7 W	25.5 W	0.88 kg

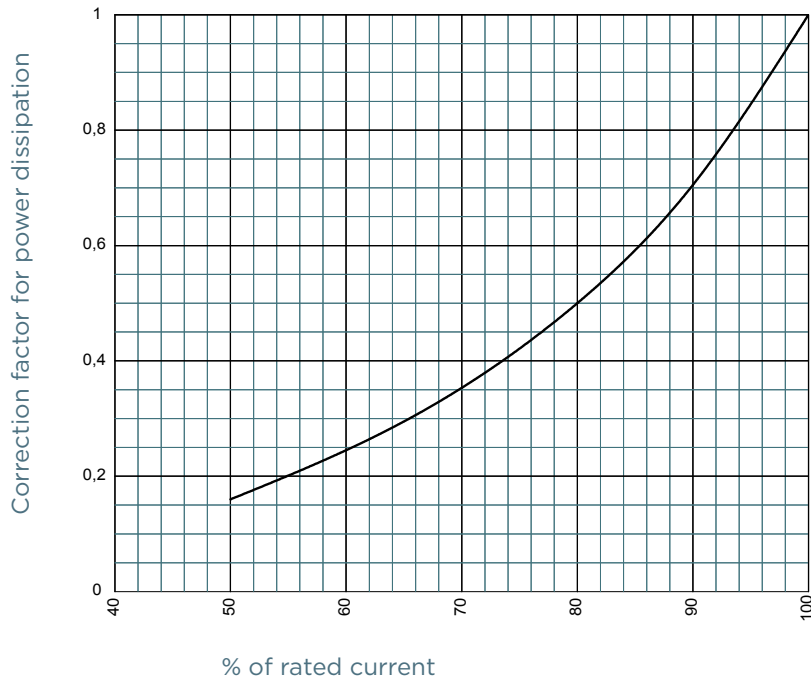
TIME CURRENT CHARACTERISTIC CURVES



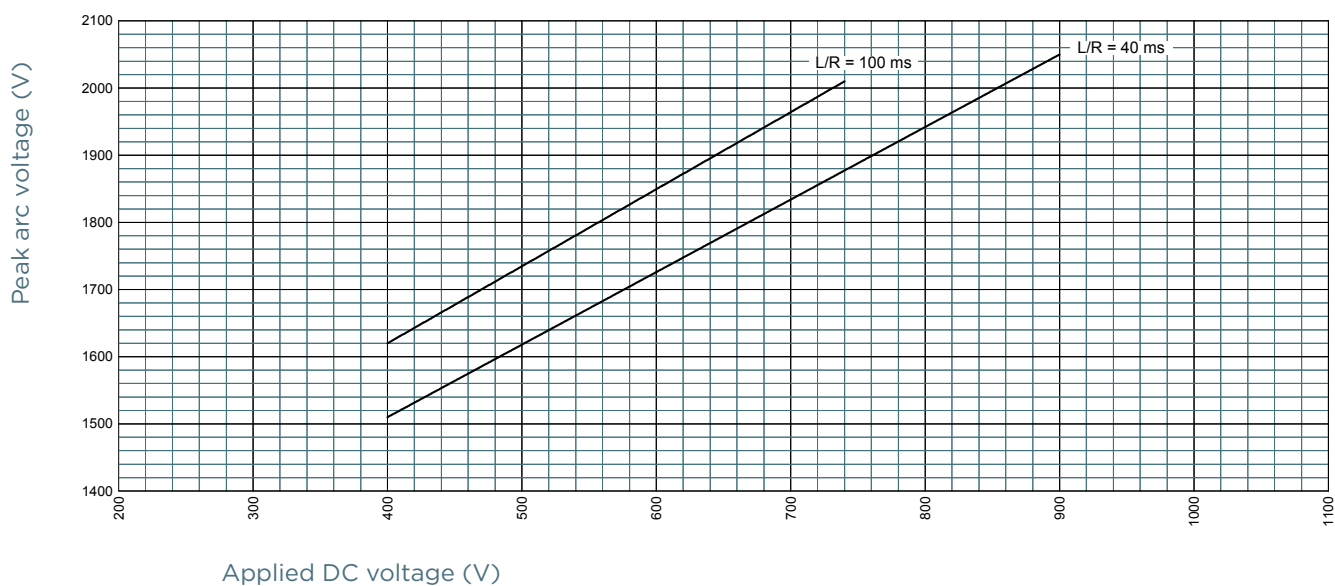
## L/R TIME CONSTANT VS DC VOLTAGE CAPABILITY



## POWER DISSIPATION



## PEAK ARC VOLTAGE

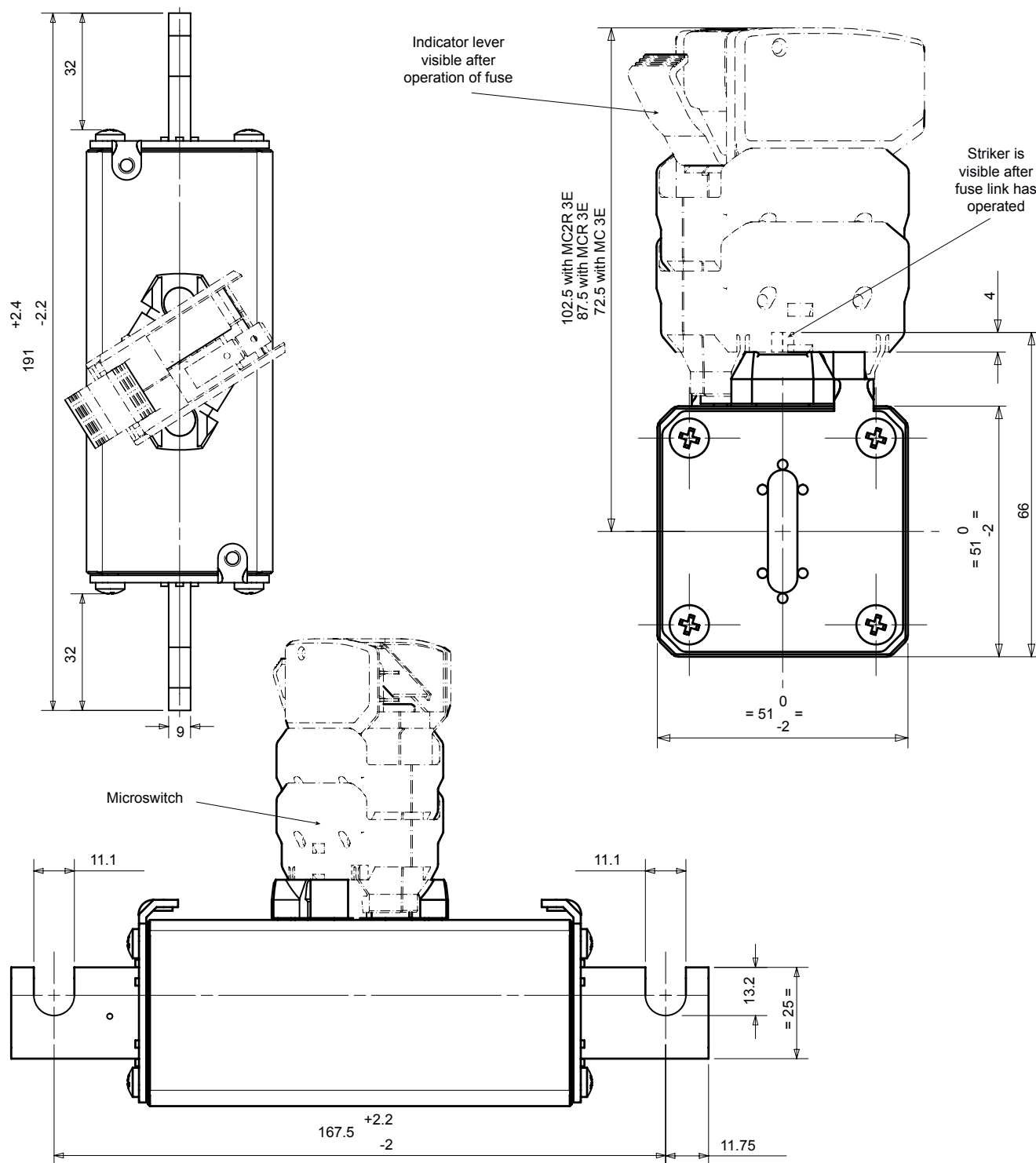


# Protistor® size 121 gR

750VDC (IEC)

## DIMENSIONS

### Size 121 gR blade contacts (EF)



Dimensions in mm

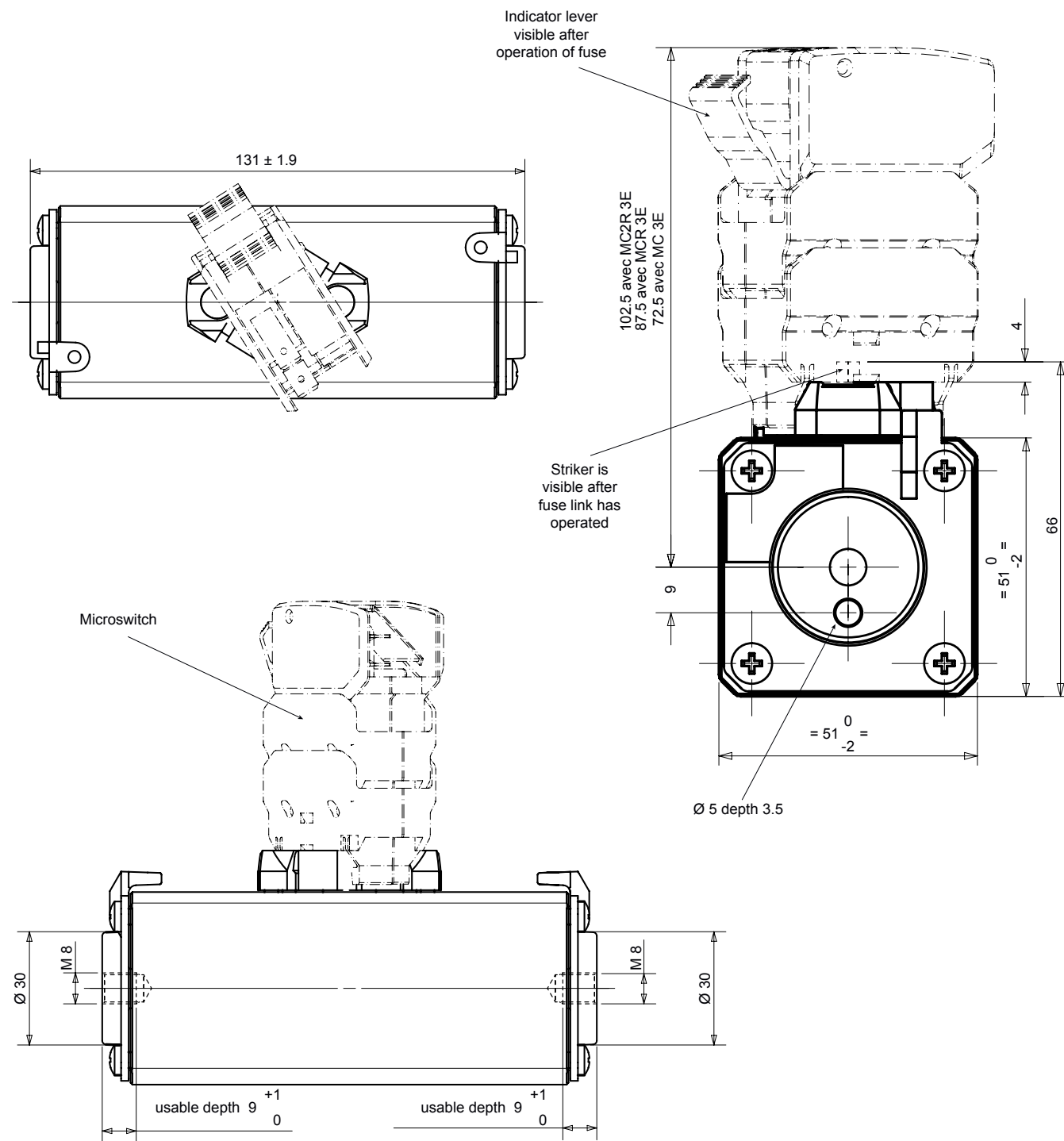
MERSEN reserves the right to change, update or correct, without notice, any information contained in this datasheet.

# Protistor® size 121 gR

750VDC (IEC)

## DIMENSIONS

### Size 121 gR threads terminals (TTF)



Dimensions in mm

MERSEN reserves the right to change, update or correct, without notice, any information contained in this datasheet.