

Central Bolted Tag fuse-links gM 690VAC/460VDC

LOW VOLTAGE IEC FUSES

BS FUSE-LINKS



The fuse complies with standard EN 60269-2 and standard BS 88 part 2. These fuses are designed for : “General purpose use” motor protection (gM type). This fuse range insures an excellent current limitation for all overloads on a large range of applications. Their size cannot allow exchange by other fuses of higher rating in their range. They are screwed into fuseholders or bolted directly onto busbars, or in fuse interrupters disconnectors.

TECHNICAL DATA OVERVIEW

Current rating In M Ich	63M80 to 315M400 A
Rated voltage AC (IEC)	690 V
Rated voltage DC (IEC)	460 V
Breaking capacity AC	80 kA
Breaking capacity DC	40 kA
Speed/Characteristic	gM
Body Material	Ceramic
BS type	BTC, BTF, BTMF

FEATURES & BENEFITS

- Excellent current limitation for all overloads

APPLICATIONS

- These fuses are designed for : “General purpose use” motor protection (gM type)

STANDARDS

- EN 60269-2
- BS88-2



Central Bolted Tag fuse-links gM 690VAC/460VDC

PRODUCT RANGE



BTC69V63M100

Type B1 690VAC/460VDC gM BTC 2 hole

Catalog number	Item number	Rated voltage AC (IEC)	Rated voltage DC (IEC)	Current rating In M Ich	Pre-arcing I ² t	Clearing I ² t at Rated Voltage	Rated breaking capacity AC	Rated breaking capacity DC	Power dissipation at I _n	Weight
BTC69V63M80	B1006619	690 V	460 V	63M80 A	8500 A ² s	48500 A ² s	80 kA	40 kA	5.1 W	0.12 kg
BTC69V63M100	C1006620	690 V	460 V	63M100 A	14000 A ² s	80000 A ² s	80 kA	40 kA	4.7 W	0.12 kg
BTC69V80M100	A1054366 ¹	690 V	460 V	80M100 A	14000 A ² s	80000 A ² s	80 kA	40 kA	6 W	0.12 kg

¹Product not compliant with ASTA 20 CERTIF.

Type B2 690VAC/460VDC gM BTF 2 hole

Catalog number	Item number	Rated voltage AC (IEC)	Rated voltage DC (IEC)	Current rating In M Ich	Pre-arcing I ² t	Clearing I ² t at Rated Voltage	Rated breaking capacity AC	Rated breaking capacity DC	Power dissipation at I _n	Weight
BTF69V125M160	G1006624	690 V	460 V	125M160 A	60000 A ² s	300000 A ² s	80 kA	40 kA	11.3 W	0.31 kg
BTF69V125M200	H1006625	690 V	460 V	125M200 A	105000 A ² s	350000 A ² s	80 kA	40 kA	10.1 W	0.31 kg



BTMF69V315M400

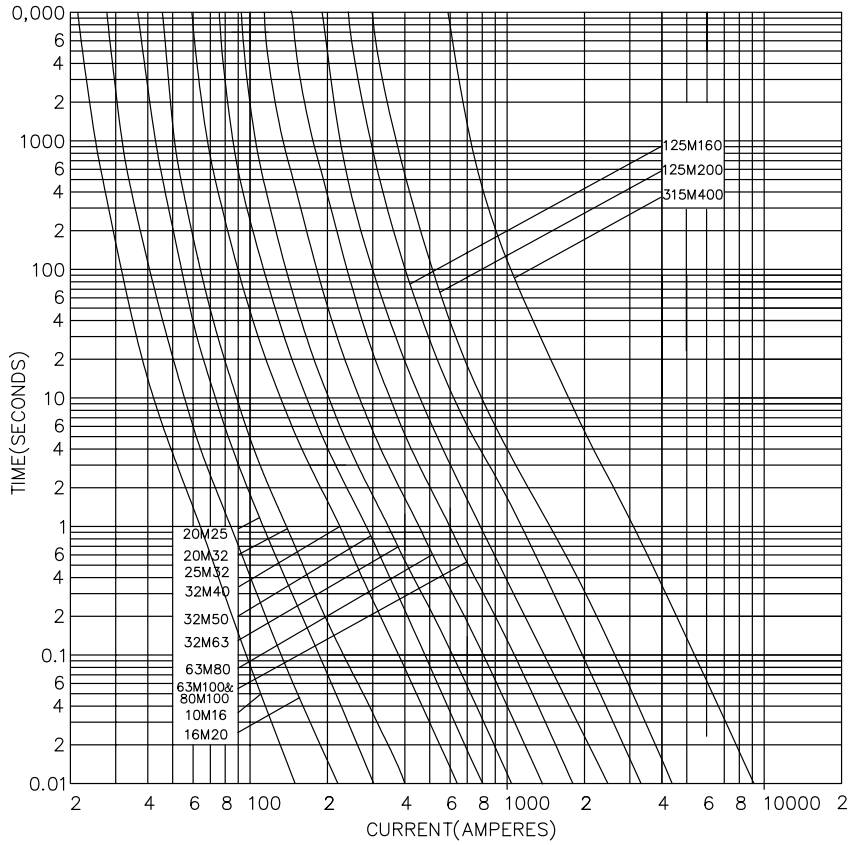
Type B4 690VAC/460VDC gM BTMF 2 hole

Catalog number	Item number	Rated voltage AC (IEC)	Rated voltage DC (IEC)	Current rating In M Ich	Pre-arcing I ² t	Clearing I ² t at Rated Voltage	Rated breaking capacity AC	Rated breaking capacity DC	Power dissipation at I _n	Weight
BTMF69V315M400	N1006630	690 V	460 V	315M400 A	505000 A ² s	2525000 A ² s	80 kA	40 kA	30 W	0.62 kg

Central Bolted Tag fuse-links gM 690VAC/460VDC

TIME CURRENT CHARACTERISTIC CURVES

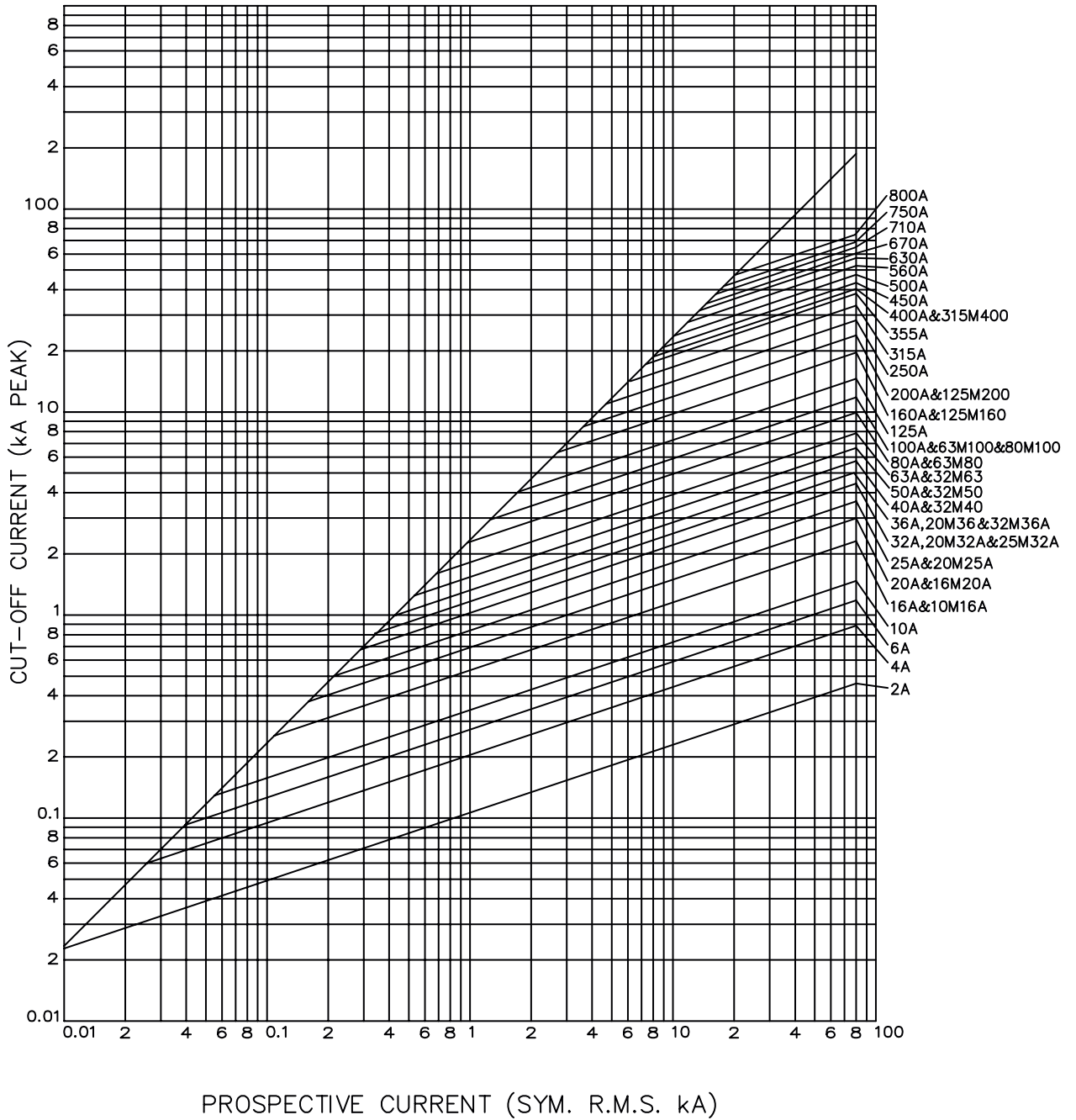
gM curve - 63M80 to 315M400 A - 690VAC / 460VDC



Central Bolted Tag fuse-links gM 690VAC/460VDC

CUT-OFF CURRENT CHARACTERISTIC

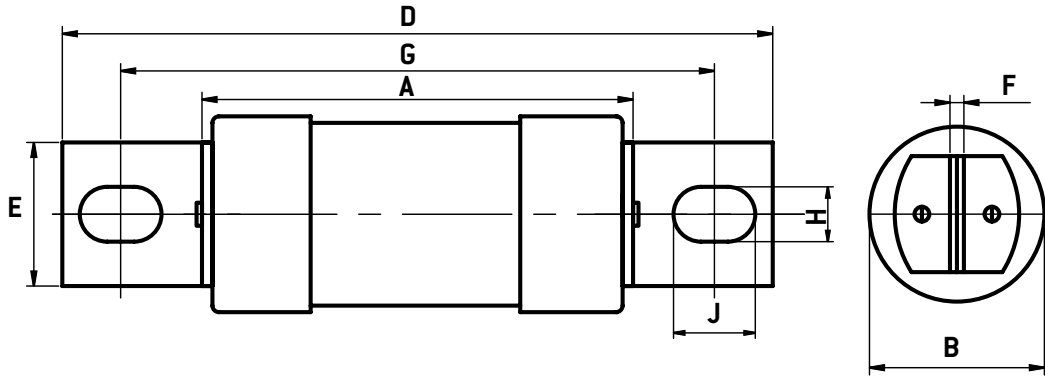
B Type - 690VAC / 460VDC



Central Bolted Tag fuse-links gM 690VAC/460VDC

DIMENSIONS

B1 BTC / B2 BTF / B4 BTMF



Dimensions in mm

BS REF	Fuse Type	Current rating (A)	A MAX	B MAX	D MAX	E MAX	F NOM	G NOM	H NOM	J NOM
B1	BTC	63M80, 63M100, 80M100	57	26.5	137	19.5	3.2	111	8.7	14
B2	BTF	125M160, 125M200	73	41.9	138	19.5	3.2	111	8.7	14
B4	BTMF	315M400	75	59.1	138	26	4.8	111	8.7	14