

# BS Street Lighting Fuses gG 415VAC

## LOW VOLTAGE IEC FUSES

### BS FUSE-LINKS



Mersen's range of street lighting fuses is carefully designed to respond effectively and reliably to the diverse needs encountered in street lighting. This diverse range aims to provide optimum protection and secure management of the power supply, guaranteeing users peace of mind in the face of everyday electrical challenges.

## TECHNICAL DATA OVERVIEW

Current Range In	2 to 32 A
Rated voltage AC (IEC)	415 V
Breaking capacity AC	16,5 to 33 kA
Speed/Characteristic	gG
Body Material	Ceramic
BS type	BMD

## FEATURES & BENEFITS

- Reliability
- Immediate isolation
- Ensures fire safety

## APPLICATIONS

- Street lighting

## STANDARDS

- IEC 60269-1 & -2
- BS 88-1 & 2



# BS Street Lighting Fuses gG 415VAC

## PRODUCT RANGE



BMD42V6

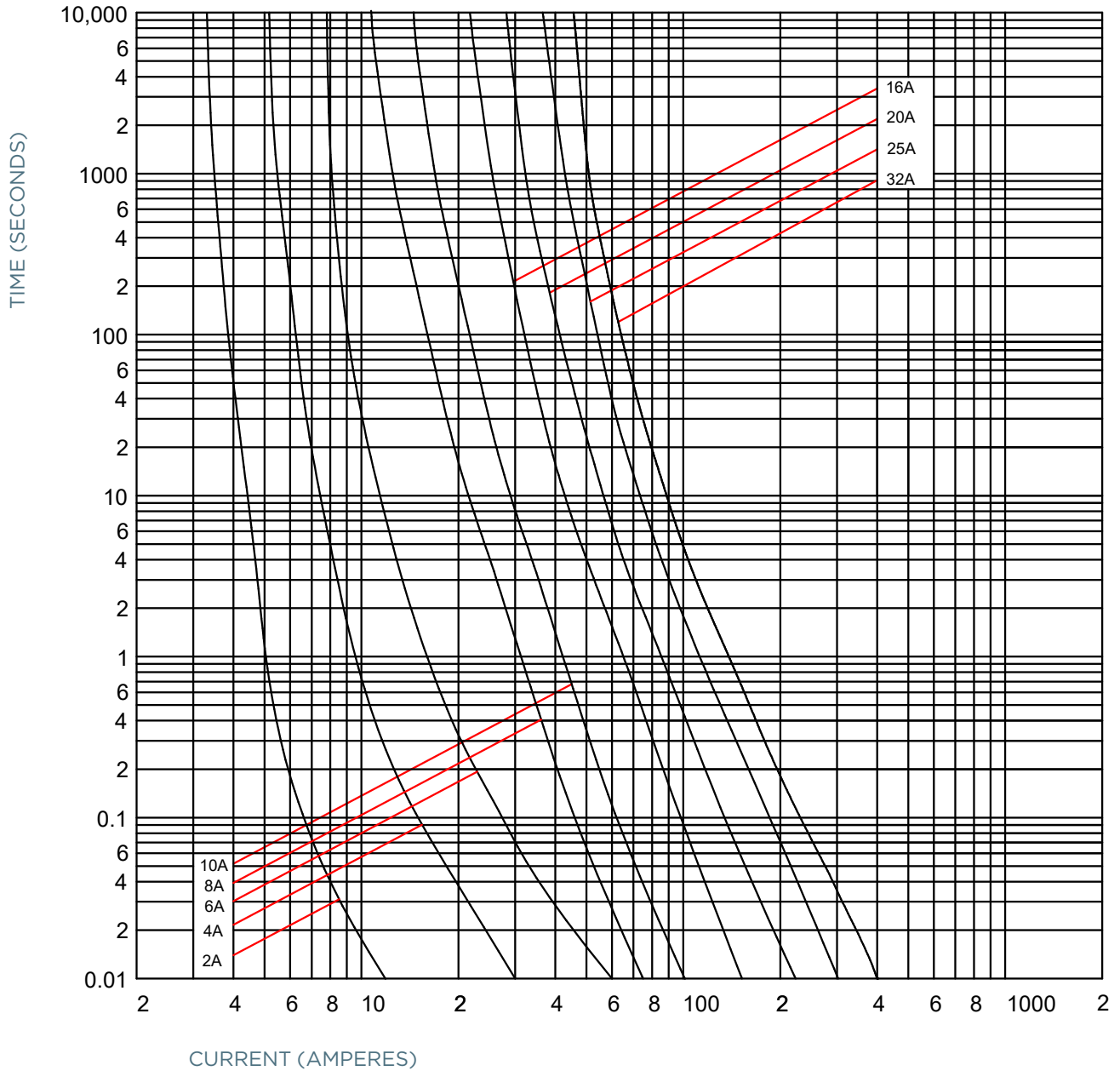
### BS Street Lighting Fuses gG 415VAC - BMD

Catalog number	Item number	Rated voltage AC (IEC)	Rated current $I_n$	Pre-arcing $I^2t$	Clearing $I^2t$ at Rated Voltage	Rated breaking capacity AC	Power dissipation at $I_n$	Package
BMD42V2	V1036973	415 V	2 A	1 A <sup>2</sup> s	3.5 A <sup>2</sup> s	80 kA	1.17 W	10
BMD42V4	W1036974	415 V	4 A	8 A <sup>2</sup> s	27 A <sup>2</sup> s	80 kA	1.48 W	10
BMD42V6	X1036975	415 V	6 A	22 A <sup>2</sup> s	77 A <sup>2</sup> s	80 kA	1.54 W	10
BMD42V8	P1065074	415 V	8 A	13 A <sup>2</sup> s	55 A <sup>2</sup> s	80 kA	1.01 W	10
BMD42V10	Y1036976	415 V	10 A	27 A <sup>2</sup> s	113 A <sup>2</sup> s	80 kA	1.42 W	10
BMD42V16	Z1036977	415 V	16 A	107 A <sup>2</sup> s	451 A <sup>2</sup> s	80 kA	1.43 W	10
BMD42V20	A1036978	415 V	20 A	241 A <sup>2</sup> s	1015 A <sup>2</sup> s	80 kA	1.52 W	10
BMD42V25	B1036979	415 V	25 A	428 A <sup>2</sup> s	1805 A <sup>2</sup> s	80 kA	2.28 W	10
BMD42V32	C1036980	415 V	32 A	668 A <sup>2</sup> s	2821 A <sup>2</sup> s	80 kA	2.64 W	10

# BS Street Lighting Fuses gG 415VAC

## TIME CURRENT CHARACTERISTIC CURVES

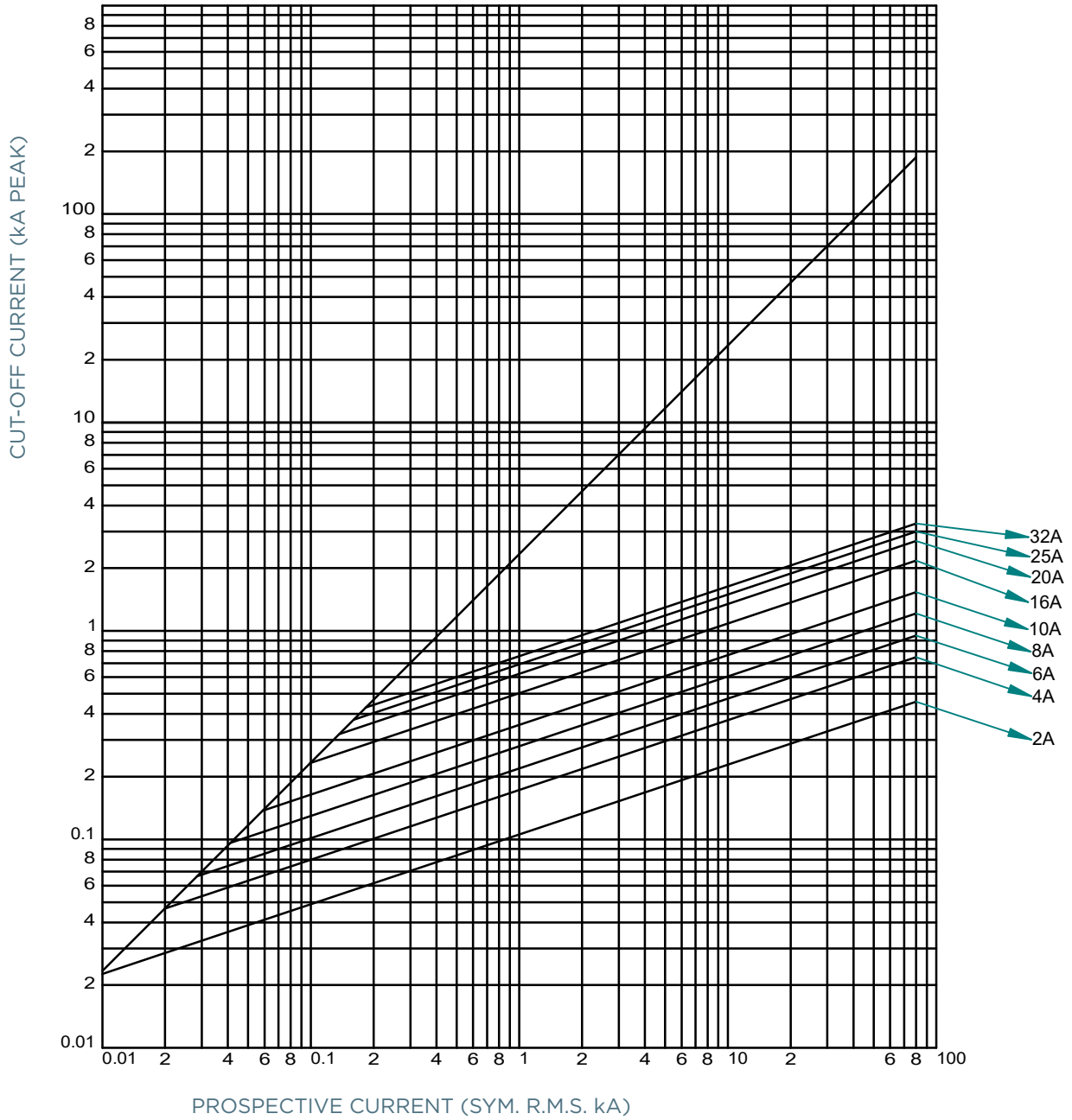
gG curve - 2 to 32 A - 415VAC BMD



# BS Street Lighting Fuses gG 415VAC

## CUT-OFF CURRENT CHARACTERISTIC

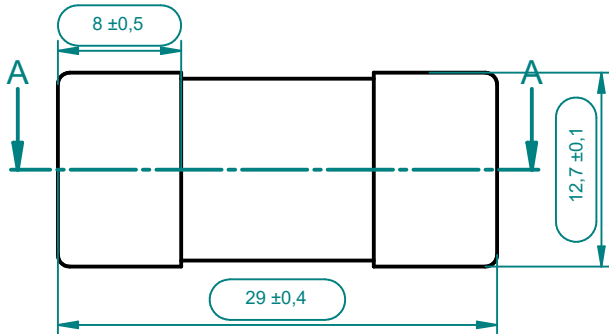
gG curve - 2 to 32 A - 415VAC BMD



# BS Street Lighting Fuses gG 415VAC

## DIMENSIONS

### BMD - 2 to 32 A - 415VAC



Dimensions in mm

Fuse Type	Current rating (A)	A MAX	B MAX	C MAX	A	B	C
BMD	2, 4, 6, 8, 10, 16, 20, 25, 32	24.4	12.8	8.5	29	8	12,7