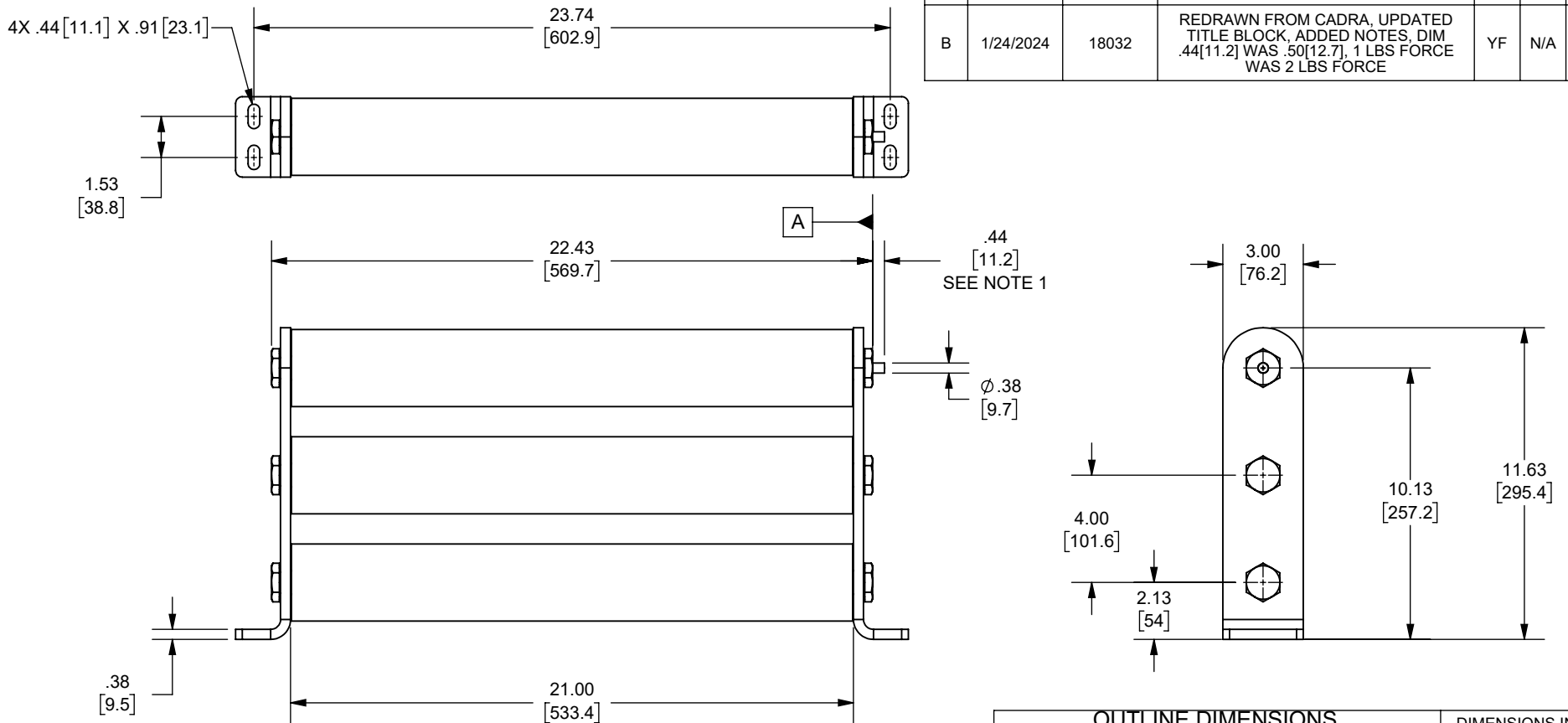


REV.	DATE	ECO	DESCRIPTION	BY	CK	APP
-	4/28/2006	N/A	INITIAL RELEASE	LDB	N/A	N/A
B	1/24/2024	18032	REDRAWN FROM CADRA. UPDATED TITLE BLOCK. ADDED NOTES. DIM .44[11.2] WAS .50[12.7], 1 LBS FORCE WAS 2 LBS FORCE	YF	N/A	SEE ECO



OUTLINE DIMENSIONS
NOT TO BE USED FOR PRODUCTION

DIMENSIONS IN []
ARE MILLIMETERS

NOTES:

- INDICATOR IS FLUSH WITH SURFACE **A** BEFORE FUSE OPENS INDICATOR EXTENDS .44 IN. [11.2mm] AFTER FUSE OPENS AND EXERTS AN 1 LBF AT THE END OF TRAVEL

Approval stage / Etat d'approbation: APPROUVÉ POUR FABRICATION / APPROVED FOR MANUFACTURING	Product Class:/ Product Type:	MEDIUM VOLTAGE R-RATED	
	Product amp rating:/ Voltage rating:	18-24X	15.5kV
Initial ECO / ECO intiale:	ECO-18032-000	Title / Titre:	Weight : Masse :
Draw by / Dessiné par: Yadyra Fang	Date : 6/14/2024	OUTLINE A155B3D0R0-(18,24)X	
Checked by / Vérifié par: Luis ARMENTA	Date : 6/14/2024		
Electrical Power 374 MERRIMAC STREET NEWBURYPORT, MA 01950	Éch / Scale : 1:6 Format / Size : A	Part / Article: SEE TABLE	Page : 1/1
		MERSEN	

A155B3D0R0-24X
A155B3D0R0-18X
CATALOG NUMBER

Ce plan strictement confidentiel est la propriété exclusive de la société MERSEN sans l'autorisation écrite de laquelle il ne peut être ni reproduit, ni copié, ni communiqué à des tiers.
This drawing and specifications there on is property of MERSEN and shall not be reproduced or copied or used in whole or in part as the base for manufacture or sale of item without written permission.