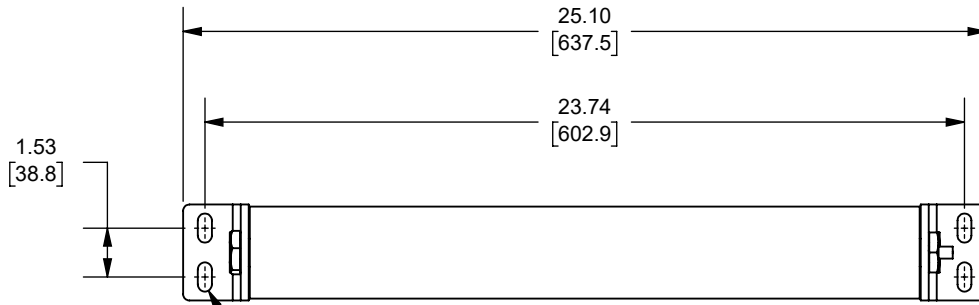
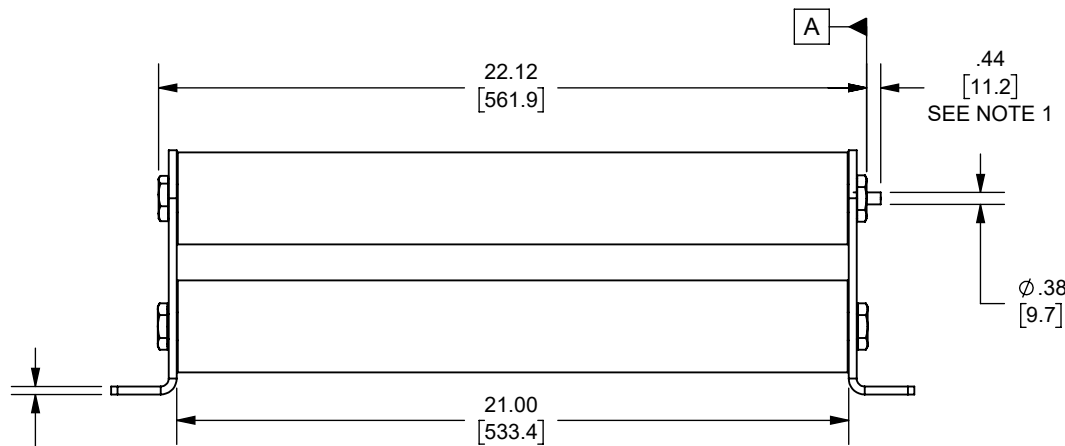


REV.	DATE	ECO	DESCRIPTION	BY	CK	APP
-	4/27/2006	N/A	INITIAL RELEASE	LDB	N/A	N/A
B	1/24/2024	18032	REDRAWN FROM CADRA, UPDATED TITLE BLOCK, ADDED NOTES, DIM .44[11.2] WAS .50[12.7], 1 LBS FORCE WAS 2 LBS FORCE	YF	N/A	SEE ECO

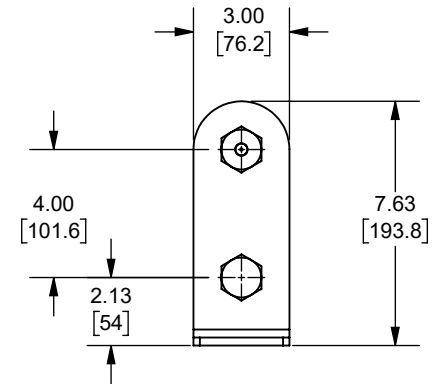


1.53 [38.8]

4X .44 [11.1] X .91 [23.1]



.25 [6.4]



OUTLINE DIMENSIONS  
NOT TO BE USED FOR PRODUCTION

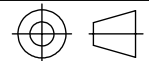
DIMENSIONS IN [ ]  
ARE MILLIMETERS

NOTES:

- INDICATOR IS FLUSH WITH SURFACE **A** BEFORE FUSE OPENS INDICATOR EXTENDS .44 IN. [11.2mm] AFTER FUSE OPENS AND EXERTS AN 1 LBF AT THE END OF TRAVEL

Approval stage / Etat d'approbation: <b>APPROUVÉ POUR FABRICATION / APPROVED FOR MANUFACTURING</b>	Product Class:/ Product Type: <b>MEDIUM VOLTAGE R-RATED</b>		
	Product amp rating:/ Voltage rating: <b>9-12R 15.5kV</b>		
Initial ECO / ECO intiale: <b>ECO-18032-000</b>	Title / Titre: <b>OUTLINE</b>	Weight : Masse :	
Draw by / Dessiné par: <b>Yadyra Fang</b>	Date : <b>6/14/2024</b>	A155B2D0R0-(9,12)R	
Checked by / Vérifié par: <b>Luis ARMENTA</b>	Date : <b>6/14/2024</b>	Drawing / de dessin: <b>701122</b>	
Electrical Power 374 MERRIMAC STREET NEWBURYPORT, MA 01950	Éch / Scale : <b>1:6</b> Format / Size : <b>A</b>	Part / Article: <b>SEE TABLE</b>	Page : 1/1

Weight :  
Masse :



Rev : **B**  
Rév :



A155B2D0R0-12R
A155B2D0R0-9R
CATALOG NUMBER

Ce plan strictement confidentiel est la propriété exclusive de la société MERSEN sans l'autorisation écrite de laquelle il ne peut être ni reproduit, ni copié, ni communiqué à des tiers.  
This drawing and specifications there on is property of MERSEN and shall not be reproduced or copied or used in whole or in part as the base for manufacture or sale of item without written permission.