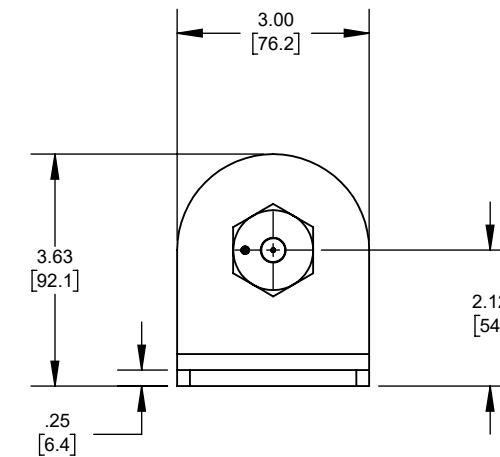
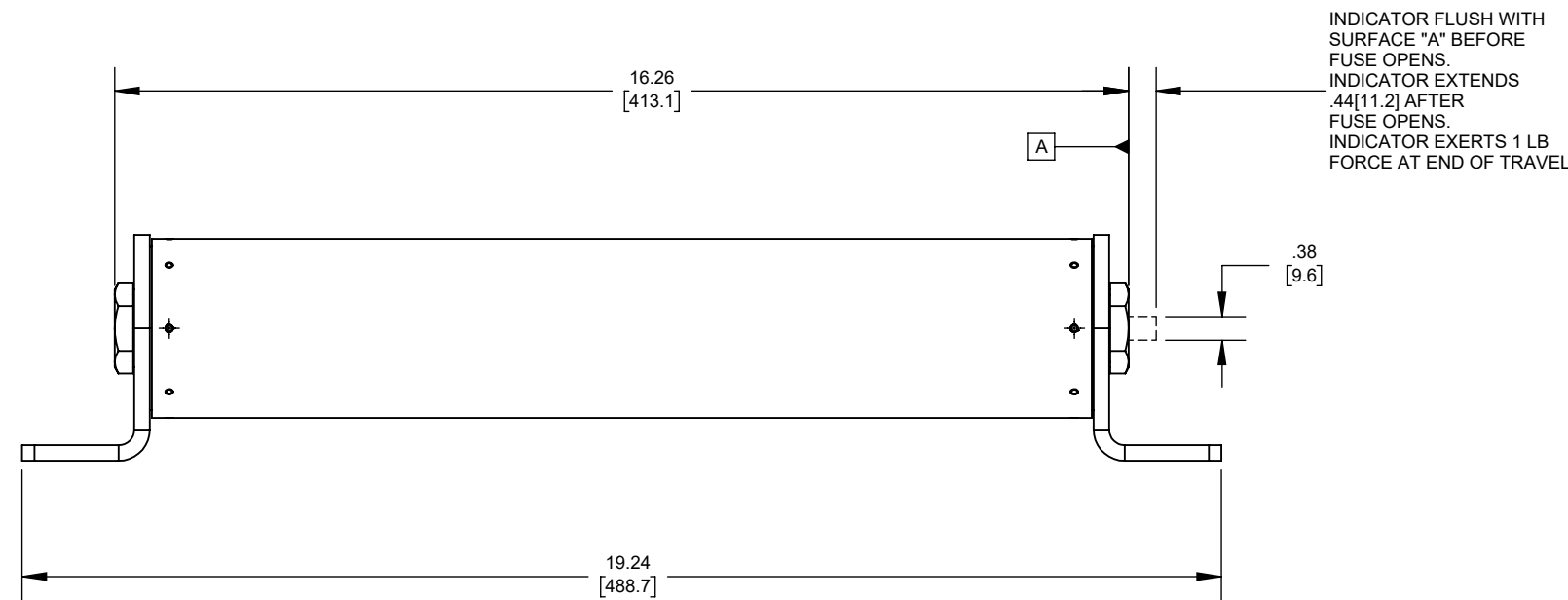
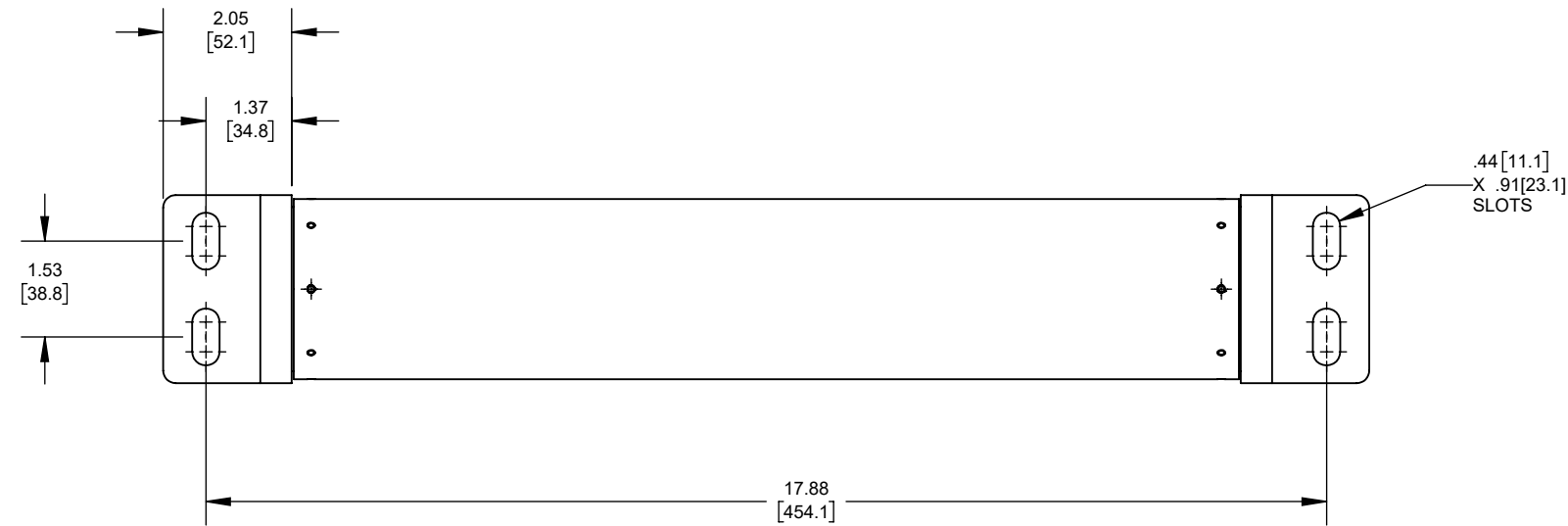


| REV. | DATE | ECO | DESCRIPTION | BY | CK | APP |
|------|------------|-------|---|-----|-----|---------|
| - | 6/14/2001 | N/A | INITIAL RELEASE | CRP | N/A | N/A |
| B | 10/26/2023 | 17857 | REDRAWN FROM CADRA, UPDATED SCALE, .44[11.2] WAS .50in(12.7mm) AND 1 LB WAS 2 LBS | LA | N/A | SEE ECO |



OUTLINE DIMENSIONS
NOT TO BE USED FOR PRODUCTION DIMENSIONS IN [] ARE MILLIMETERS

| | |
|-----------------|--------|
| A055B1DAR0-200E | 200E |
| A055B1DAR0-175E | 175E |
| A055B1DAR0-150E | 150E |
| A055B1DAR0-125E | 125E |
| A055B1DAR0-100E | 100E |
| A055B1DAR0-80E | 80E |
| A055B1DAR0-65E | 65E |
| A055B1DAR0-50E | 50E |
| A055B1DAR0-40E | 40E |
| A055B1DAR0-30E | 30E |
| A055B1DAR0-25E | 25E |
| A055B1DAR0-20E | 20E |
| A055B1DAR0-15E | 15E |
| A055B1DAR0-10E | 10E |
| CATALOG NUMBER | RATING |

| | | | |
|---|---|--|------------------------|
| Approval stage / Etat d'approbation: APPROUVÉ POUR FABRICATION / APPROVED FOR MANUFACTURING | Product Class:/ Product Type: MV E-RATED BOLT-IN FUSE AMP-TRAP | | |
| Initial ECO / ECO initiale: ECO-17857-000 | Product amp rating:/ Voltage rating: 10-200E 5.5kV MAX | | |
| Draw by / Dessiné par: Luis ARMENTA | Date: 11/14/2023 | Title / Titre: OUTLINE A055B1DAR0-(10-200)E | Weight / Masse: |
| Checked by / Vérifié par: Yadyra Fang | Date: 11/14/2023 | Drawing / de dessin: 700665 | Rev / Rév: B |
| Electrical Power 374 MERRIMAC STREET NEWBURYPORT, MA 01950 | Éch / Scale: 1:3 Format / Size: B | Part / Article: SEE TABLE | Page: 1/1 |
| MERSEN | | | |

Ce plan strictement confidentiel est la propriété exclusive de la société MERSEN sans l'autorisation écrite de laquelle il ne peut être ni reproduit, ni copié, ni communiqué à des tiers.
This drawing and specifications there on is property of MERSEN and shall not be reproduced or copied or used in whole or in part as the base for manufacture or sale of item without written permission.