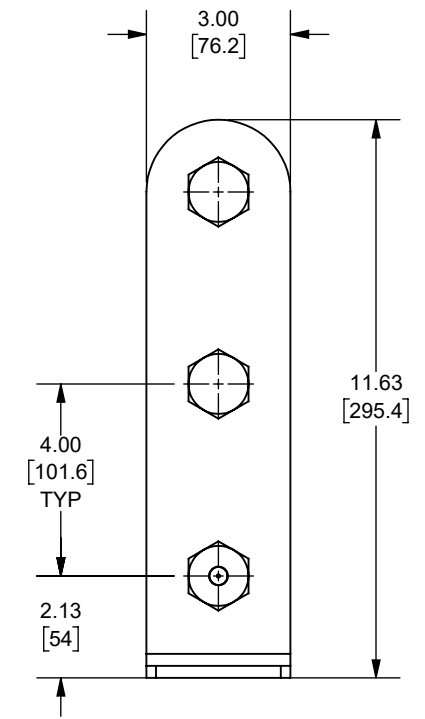
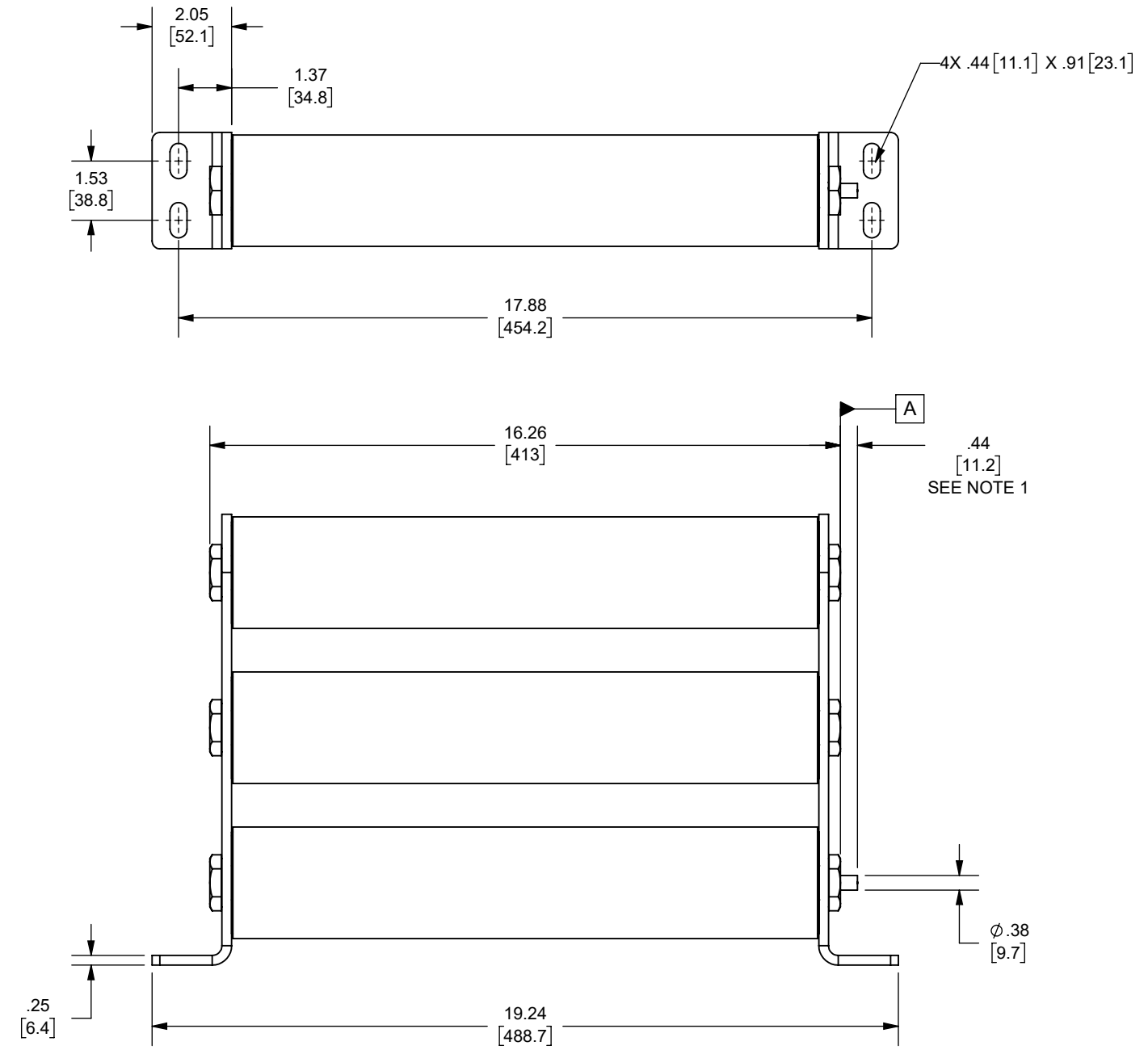


REV.	DATE	ECO	DESCRIPTION	BY	CK	APP
B	2/25/2008	N/A	UPDATED OUTLINE FORMAT	LDB	N/A	SEE ECO
C	1/12/2024	18032	UPDATED TITLE BLOCK, ADDED NOTES, DIM .44 [11.2] WAS .50 [12.7], 1 LBS FORCE WAS 2 LBS FORCE	YF	N/A	SEE ECO



OUTLINE DIMENSIONS  
NOT TO BE USED FOR PRODUCTION

DIMENSIONS IN [ ]  
ARE MILLIMETERS

NOTES:

1. INDICATOR IS FLUSH WITH SURFACE **A** BEFORE FUSE OPENS  
INDICATOR EXTENDS .44 IN. [11.2mm] AFTER FUSE OPENS AND EXERTS  
AN 1 LBF AT THE END OF TRAVEL

A051B3DAR0-57X  
A051B3DAR0-48X  
CATALOG  
NUMBER

Approval stage / Etat d'approbation: <b>APPROUVÉ POUR FABRICATION / APPROVED FOR MANUFACTURING</b>		Product Class: / Product Type: <b>MEDIUM VOLTAGE MOTOR CIRCUIT</b>	
Initial ECO / ECO initiale: <b>ECO-18032-000</b>		Product amp rating: / Voltage rating: <b>48X-57X 5.2kV</b>	
Draw by / Dessiné par: <b>Yadyra Fang</b>	Date: <b>6/14/2024</b>	Title / Titre: <b>OUTLINE A051B3DAR0-(48,57)X</b>	Weight / Masse:
Checked by / Vérifié par: <b>Luis ARMENTA</b>	Date: <b>6/14/2024</b>	Drawing / de dessin: <b>24410</b>	Rev / Rév: <b>C</b>
Electrical Power 374 MERRIMAC STREET NEWBURYPORT, MA 01950	Éch / Scale: <b>1:4</b> Format / Size: <b>B</b>	Part / Article: <b>SEE TABLE</b>	Page: 1/1



Ce plan strictement confidentiel est la propriété exclusive de la société MERSEN sans l'autorisation écrite de laquelle il ne peut être ni reproduit, ni copié, ni communiqué à des tiers.  
This drawing and specifications there on is property of MERSEN and shall not be reproduced or copied or used in whole or in part as the base for manufacture or sale of item without written permission.