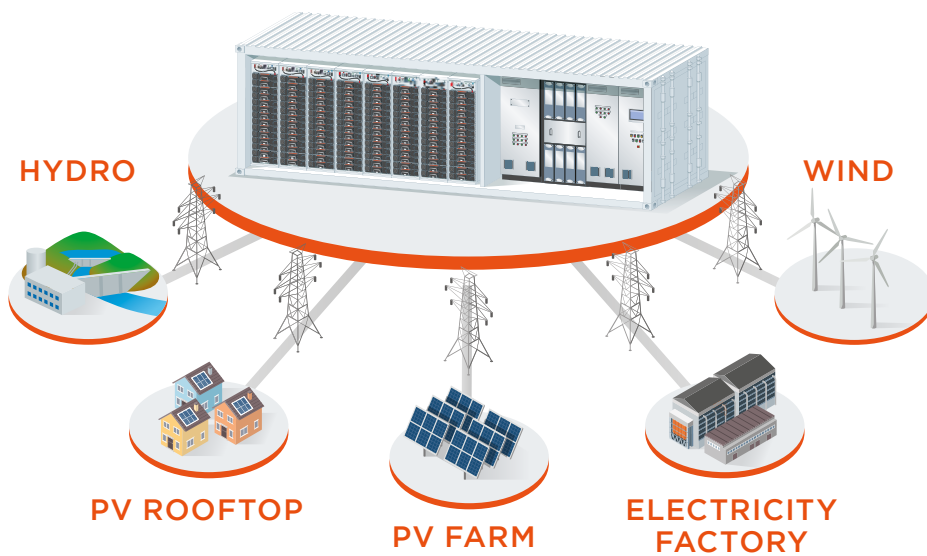


# PROTECTION FOR DC BATTERIES & INVERTERS

ABAT FUSES  
500A TO 1250A



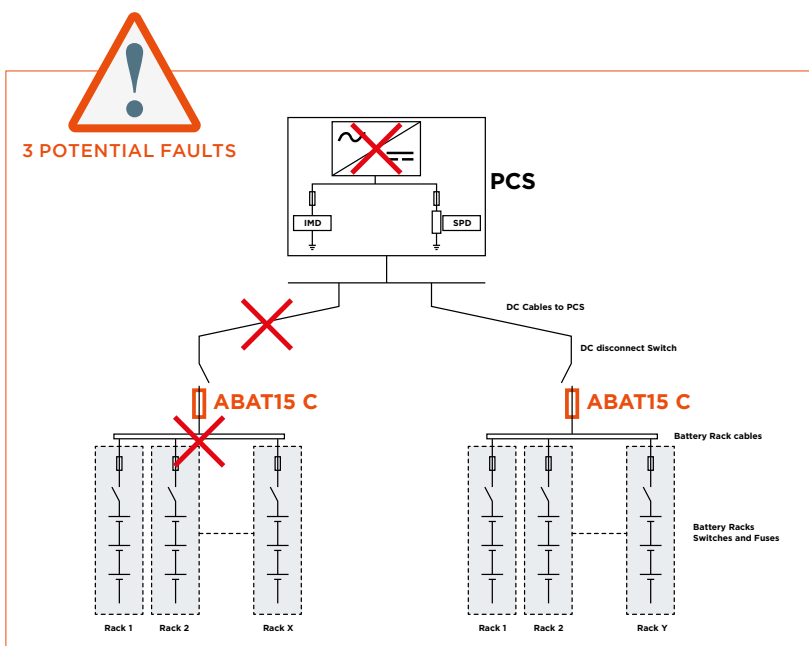
ABAT15C  
1500VDC



ABAT C  
FROM 500A TO 1250A

- Designed for **DC applications**
- **Fast and compactness**
- Tested **up to 250kA**
- Dedicated for **battery protection**

- UL Recognized - UL 248-13
- IEC 60 269-4 VSI
- **IEC 60 269-7** (standard for battery protection)



CONTACT US

- Please contact our technical support to help you choose the right fuse:  
ts.sbm@mersen.com

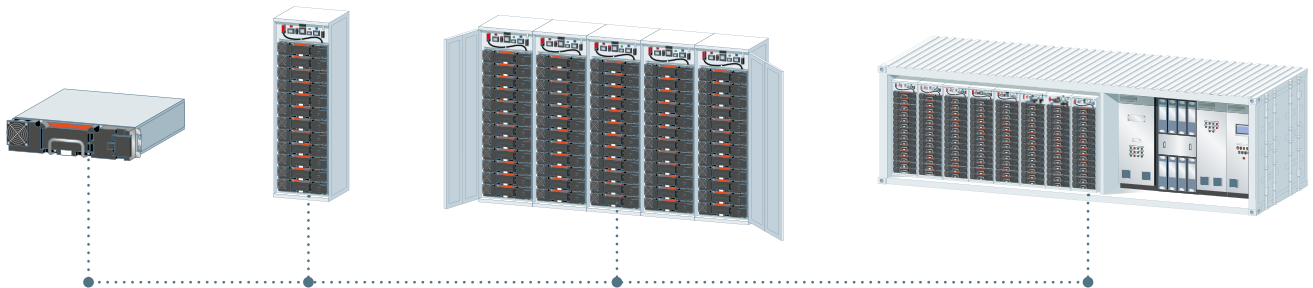
# PROTECTION FOR DC BATTERIES & INVERTERS



## ABAT15C with flush ends TTF\*

CATALOG NUMBER	ITEM NUMBER	RATED DC VOLTAGE	RATED CURRENT I <sub>n</sub>	PRE-ARCING I <sup>2</sup> T	CLEARING I <sup>2</sup> T	MAX. INTERRUPTING RATING IR @1500VDC, L/R=4ms	WATT LOSS @ 0,8 I <sub>n</sub>
ABAT15C500-AIA	B1200486	1500 V	500 A	36,5 kA <sup>2</sup> s	125 kA <sup>2</sup> s	250 kA	91 W
ABAT15C550-AIA	C1200487	1500 V	550 A	50 kA <sup>2</sup> s	165 kA <sup>2</sup> s	250 kA	94 W
ABAT15C630-AIA	D1200488	1500 V	630 A	66 kA <sup>2</sup> s	275 kA <sup>2</sup> s	250 kA	96 W
ABAT15C700-AIA	E1200489	1500 V	700 A	84 kA <sup>2</sup> s	370 kA <sup>2</sup> s	250 kA	102 W
ABAT15C800-AIA	F1200490	1500 V	800 A	110 kA <sup>2</sup> s	530 kA <sup>2</sup> s	250 kA	109 W
ABAT15C900-AIA	G1200491	1500 V	900 A	159 kA <sup>2</sup> s	765 kA <sup>2</sup> s	250 kA	110 W
ABAT15C1000-AIB	H1200492	1500 V	1000 A	440 kA <sup>2</sup> s	1515 kA <sup>2</sup> s	250 kA	91 W
ABAT15C1250-AIA	J1200493	1500 V	1250 A	678 kA <sup>2</sup> s	2620 kA <sup>2</sup> s	250 kA	125 W

\*All Mersen ABAT15 C fuses are made in France.



### MODULE

MONITORING  
BUSBAR,  
COOLING AND  
M-FUSES



### RACK, BMS\* & STRINGS

ABAT FUSES AND HIGH-SPEED DC FUSES



### CONTAINER & PCS\*\*

BUSBAR, COOLING, HIGH SPEED  
FUSES, ABAT FUSES, GBAT FUSES,  
SPD, AND CAPACITORS



\* Battery Management System  
\*\*Power Conditioning System