

# PROTECT YOUR HOME INVESTMENTS WITH MERSEN'S SURGE-TRAP® STXH TYPE 1 SURGE PROTECTIVE DEVICE



Ask your Electrical Contractor for whole house protection with the reliability and safety of Mersen's Surge-Trap STXH device

Think about all of the expensive and important electronics in your home. Wouldn't it be nice to know that your investments are safe and protected from lightning strikes or other sources of voltage surges?

- Television
- Home Entertainment System
- Smart Home Equipment
- Kitchen Appliances
- Washer & Dryer
- Air Conditioner
- Security System

## RELAX WITH MAXIMUM PROTECTION FROM MERSEN'S SURGE TRAP® STXH TYPE 1 SPD

Mersen's Surge-Trap® STXH surge protective device adds a critical layer of surge protection for your entire home. From your family room to your office, and your kitchen, your entire electrical system is protected. This simple whole house solution is installed at your load center - out of sight, out of mind.

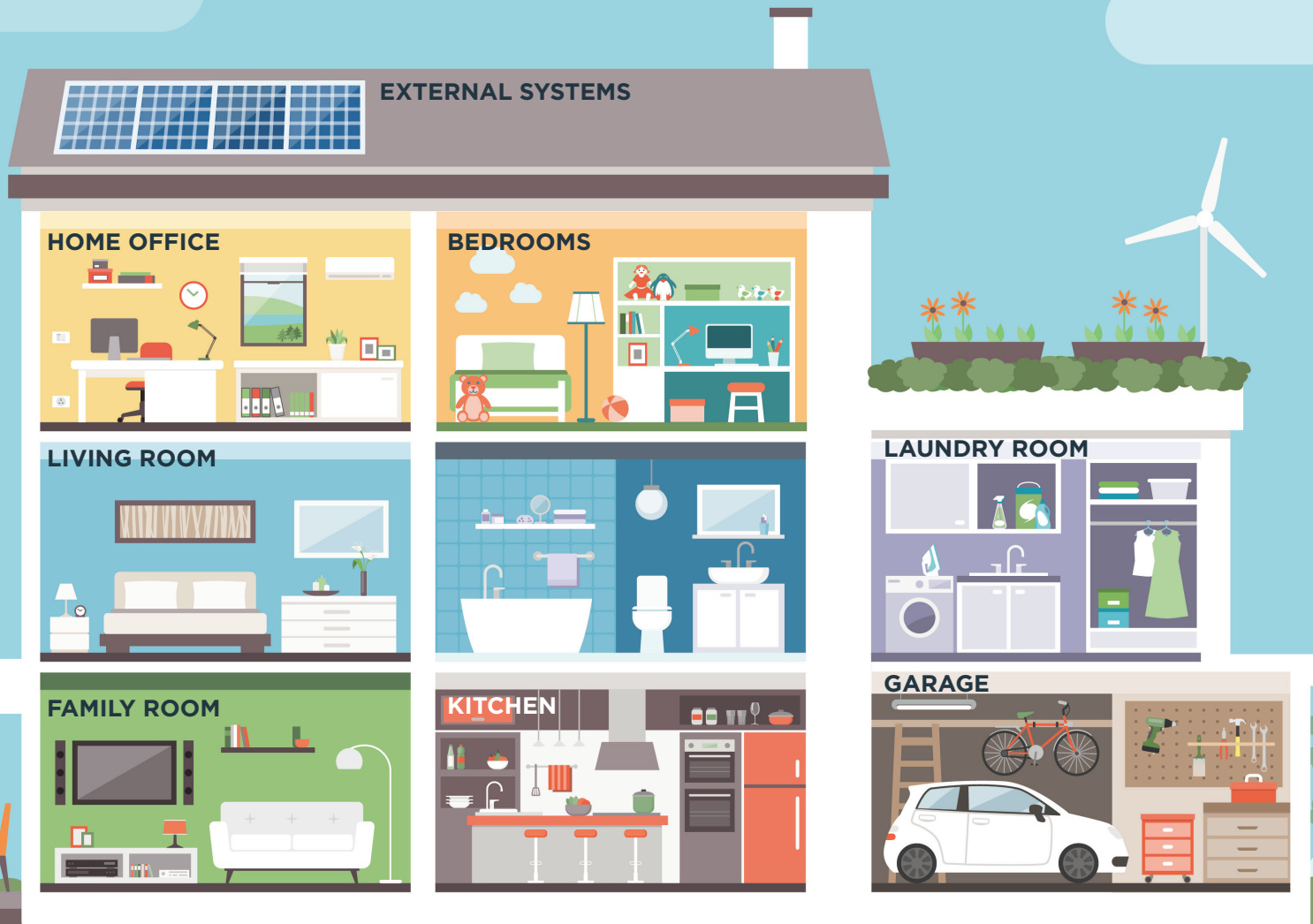
Featuring Mersen's industry leading TPMOV® Technology inside, Mersen's Surge-Trap® SPDs meet the rigorous safety requirements of the UL 1449 4th edition safety standard and need no additional overcurrent protection.

**Rest easy knowing your home and valuable electronics are protected.**



Look for part number STXH240S05

# ONE COMPACT DEVICE PROTECTS YOUR WHOLE HOUSE FROM DAMAGING SURGES MERSEN'S SURGE-TRAP® STXH TYPE 1 SPD



## HOME OFFICE

- Computer
- Monitor
- Printer

## LIVING/FAMILY ROOM

- Entertainment System
- Television
- Smart Thermostat

## BEDROOMS

- Mobile Devices (tablets, cell phones, games)
- Television

## KITCHEN

- Stove
- Refrigerator
- Small Appliances
- Home Hub

## LAUNDRY ROOM

- Washer
- Dryer

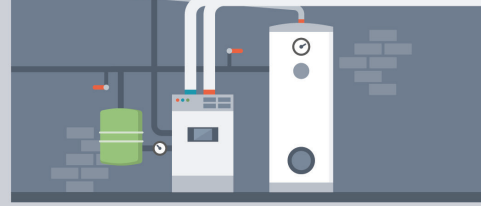
## GARAGE

- Charging Station
- Power Tools

## UTILITY ROOM

- Furnace
- Water Heater
- HVAC

## UTILITY ROOM



## EXTERNAL SYSTEMS

- Rooftop Solar Panels
- Wind Turbine
- Security System