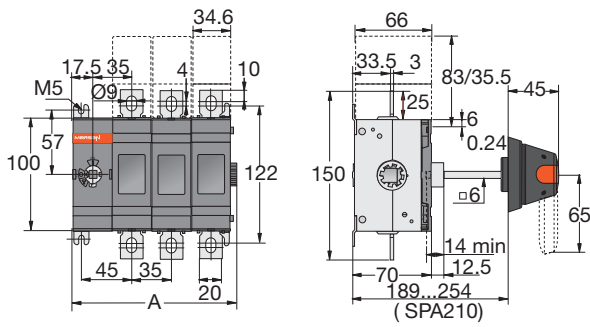
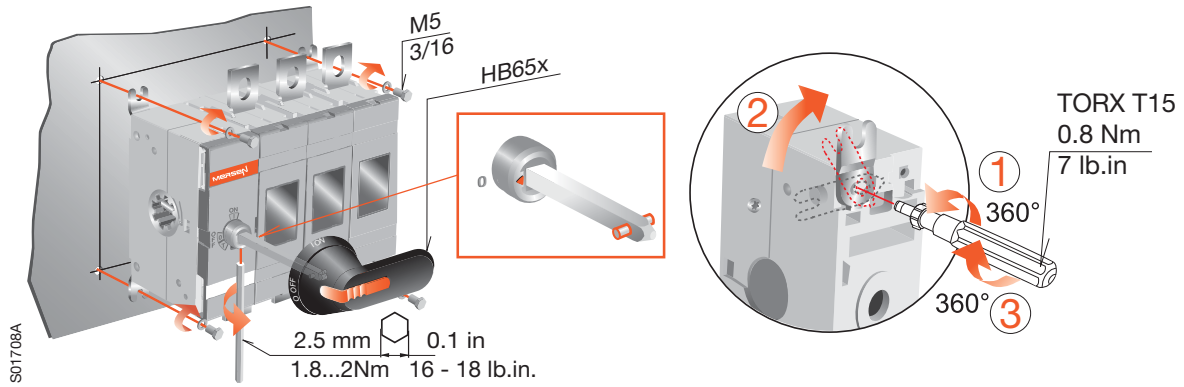


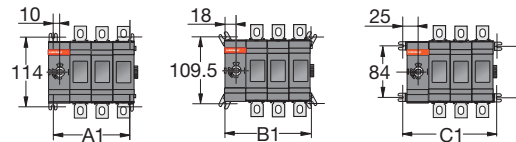
M160-250x Non-Fused

Document no. 34M160-250NF-A

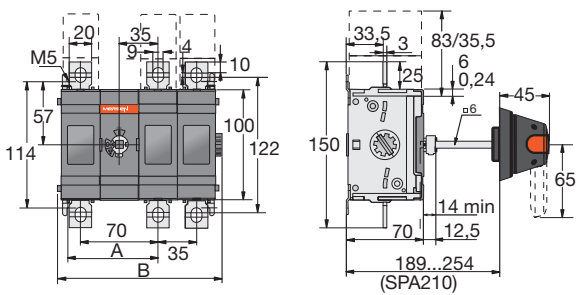
M160Ex/M200Ex/M250Ex



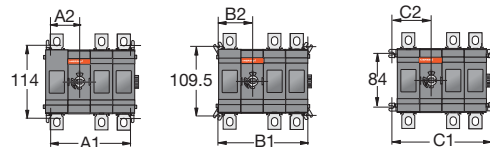
M160-250E, 03 or 30 configuration



M160/200/250				
mm	E01	E02	E03	E04
A	75.5	110.5	145.5	180.5
A1	55	90	125	160
B1	71	106	141	176
C1	85	120	155	190



M160-250E, 11 or 22 configuration

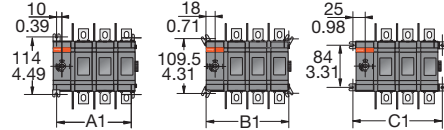
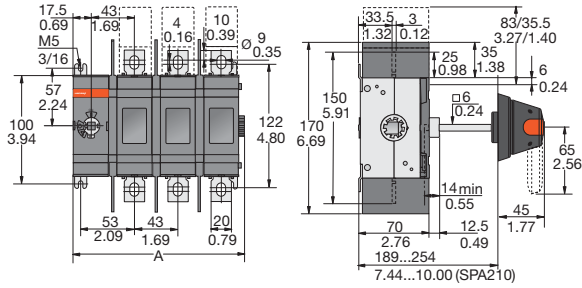


M160/200/250						
mm	E11	E12	E13	E22	E23	E33
A	80	80	80	115	115	150
B	115.5	150.5	185.5	185.5	220.5	255.5
A1	90	125	160	160	195	230
A2	45	45	45	80	80	115
B1	106	141	141	176	211	246
B2	53	53	53	88	88	123
C1	120	155	190	190	225	260
C2	60	60	60	95	95	130

M160-250x Non-Fused

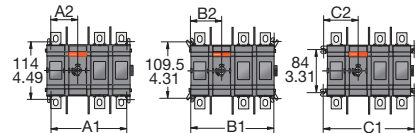
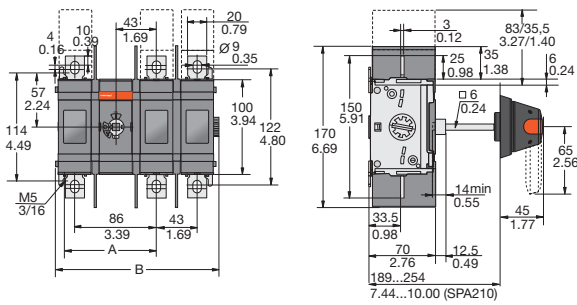
M200Ux

For Class J fuse types, 0-3 and 3-0 configurations



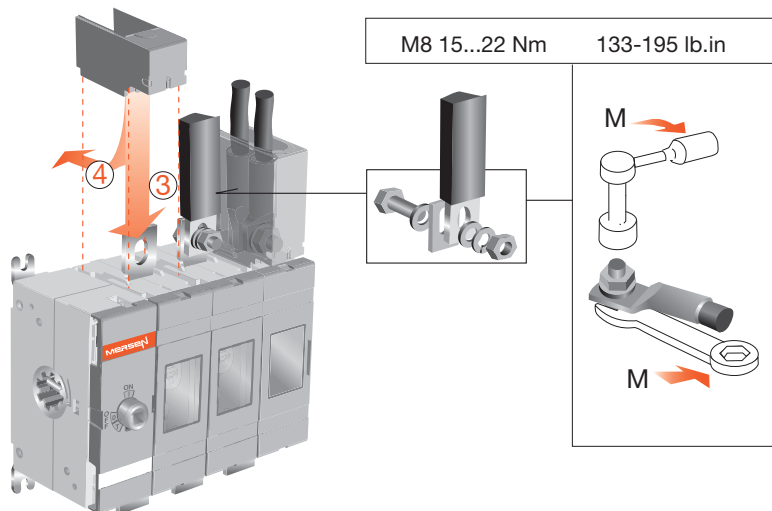
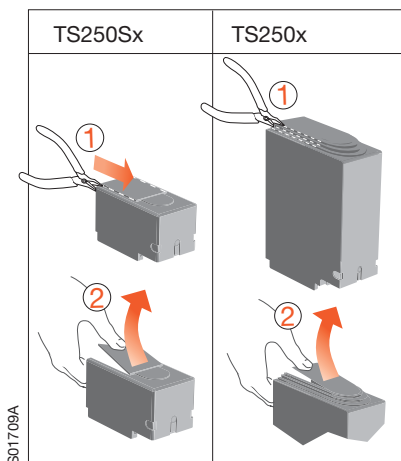
mm in	M200U			
	U01	U02	U03	U04
A	83.5 / 3.24	126.5 / 4.98	169.5 / 6.67	212.5 / 8.37
A1	63 / 2.48	106 / 4.17	149 / 5.87	192 / 7.56
B1	79 / 3.11	122 / 4.80	165 / 6.50	208 / 8.19
C1	93 / 3.66	136 / 5.35	179 / 7.05	222 / 8.74

For Class J types, 1-1 to 2-2 configurations



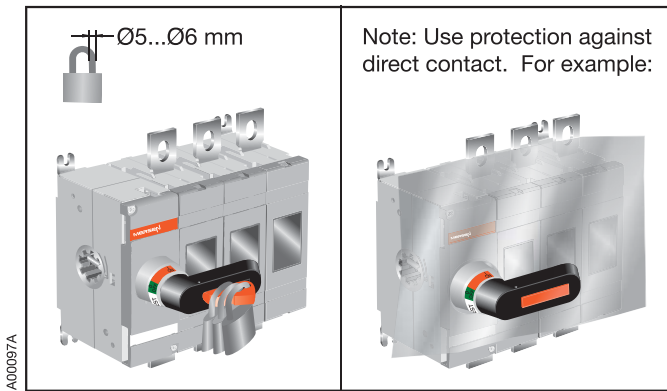
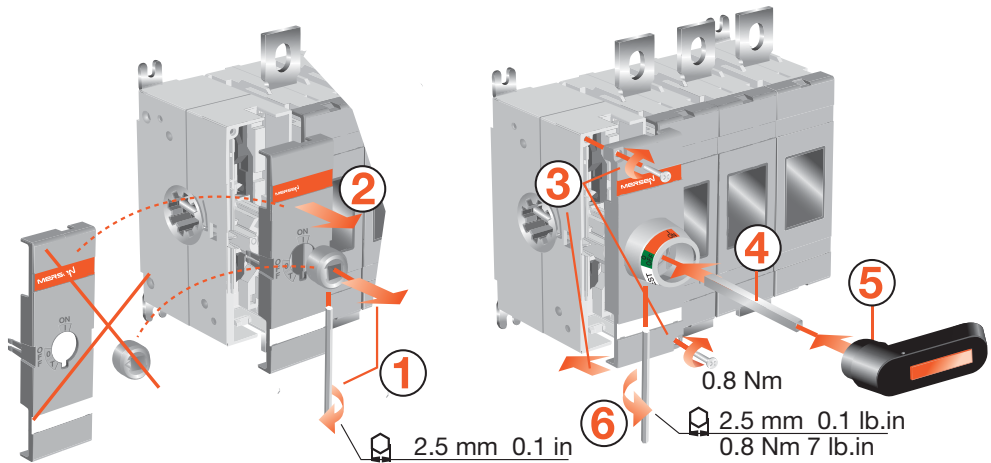
mm in	M200U			
	U11/E11W	U12/E12W	U13/E13W	U22/E22W
A	96 / 3.78	96 / 3.78	96 / 3.78	139 / 5.47
B	131.5 / 5.18	174.5 / 6.87	217.5 / 8.56	217.5 / 8.56
A1	106 / 4.17	149 / 5.87	192 / 7.56	192 / 7.56
A2	53 / 2.09	53 / 2.09	53 / 2.09	96 / 3.78
B1	122 / 4.80	165 / 6.50	208 / 8.19	208 / 8.19
B2	61 / 2.40	61 / 2.40	61 / 2.40	104 / 4.09
C1	136 / 5.35	179 / 7.05	222 / 8.74	222 / 8.74
C2	68 / 2.69	68 / 2.68	68 / 2.68	111 / 4.37

Terminal shrouds

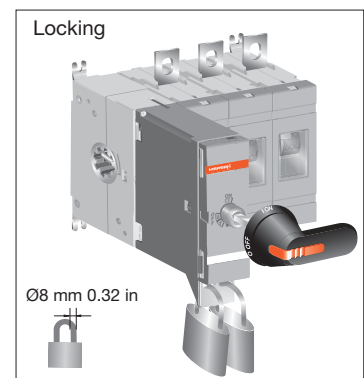
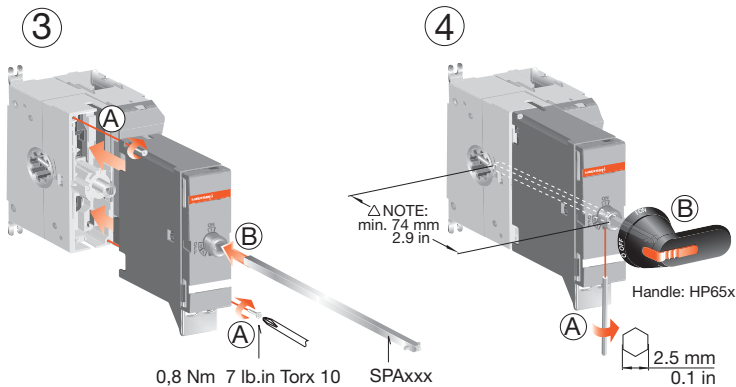
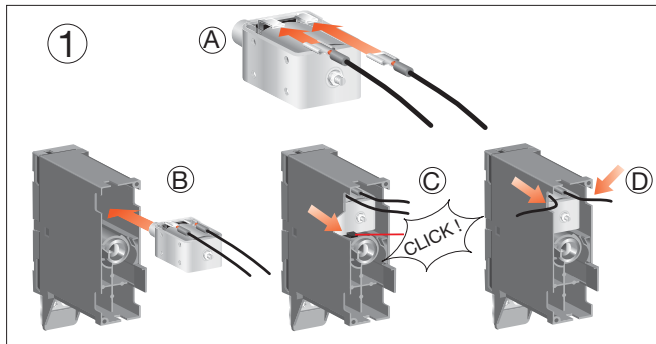
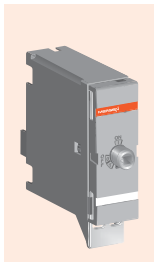


M160-250x Non-Fused

Handle direct



LON160 LOFF160 Locking mechanism for M160x-250x non-fused

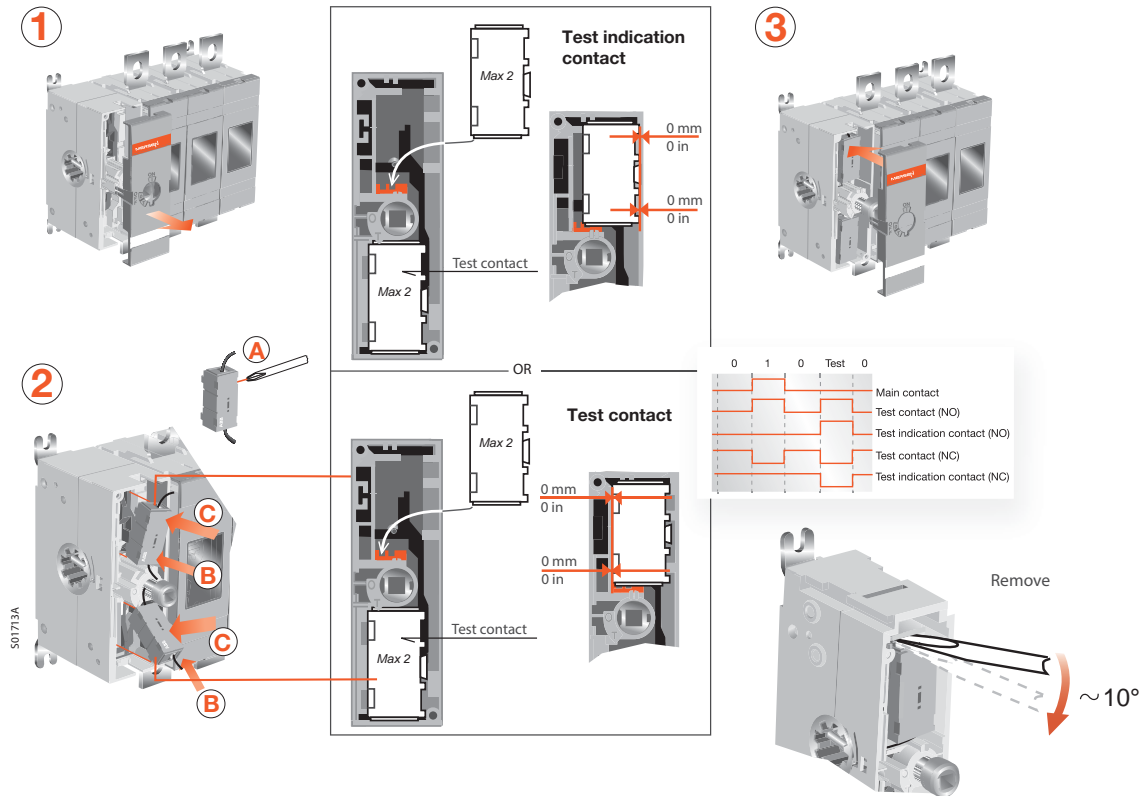


A04016

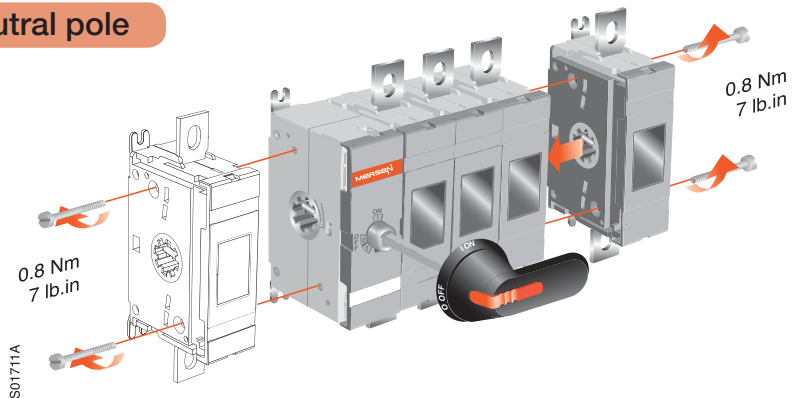
M160-250x Non-Fused

Internally-mounted Auxiliary contacts

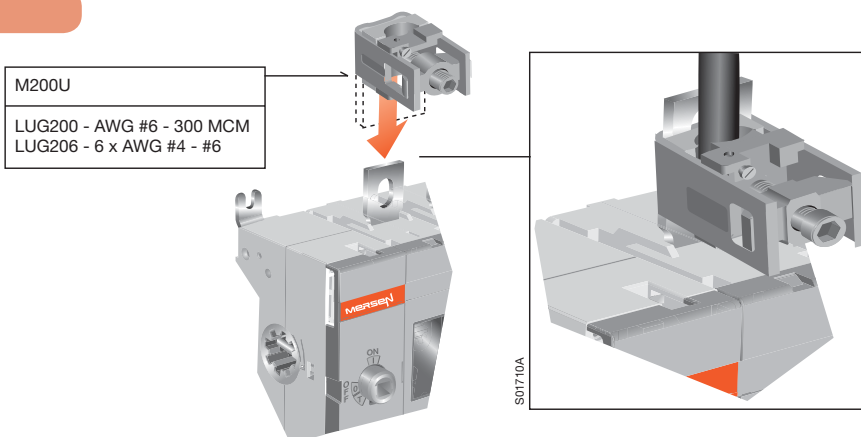
NO: OA1G10
NC: OA3G01



4P250 Neutral pole

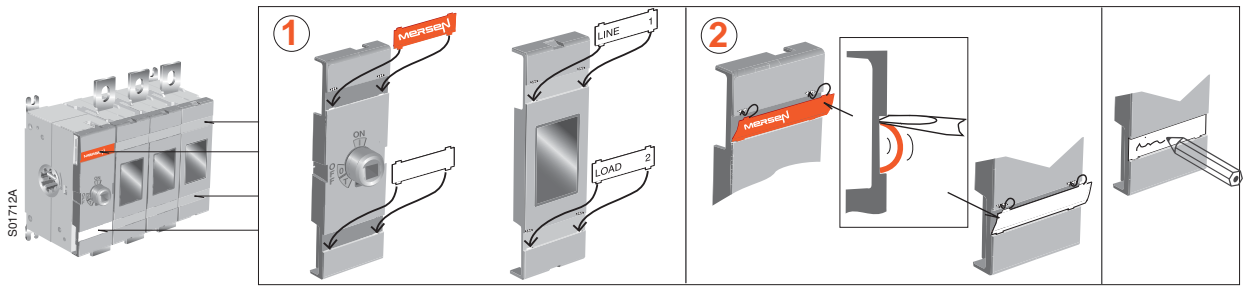


Lugs



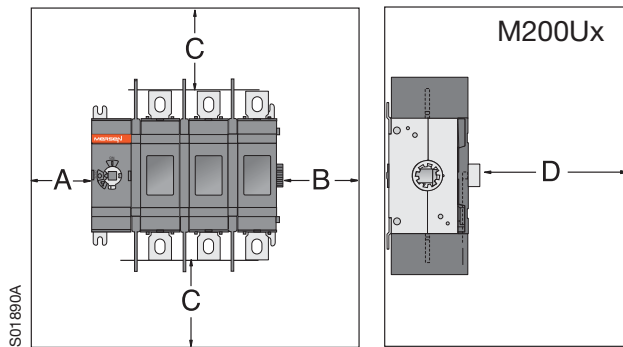
M160-250x Non-Fused

Label



Clearances per UL98

Minimum enclosure size or equivalent volume

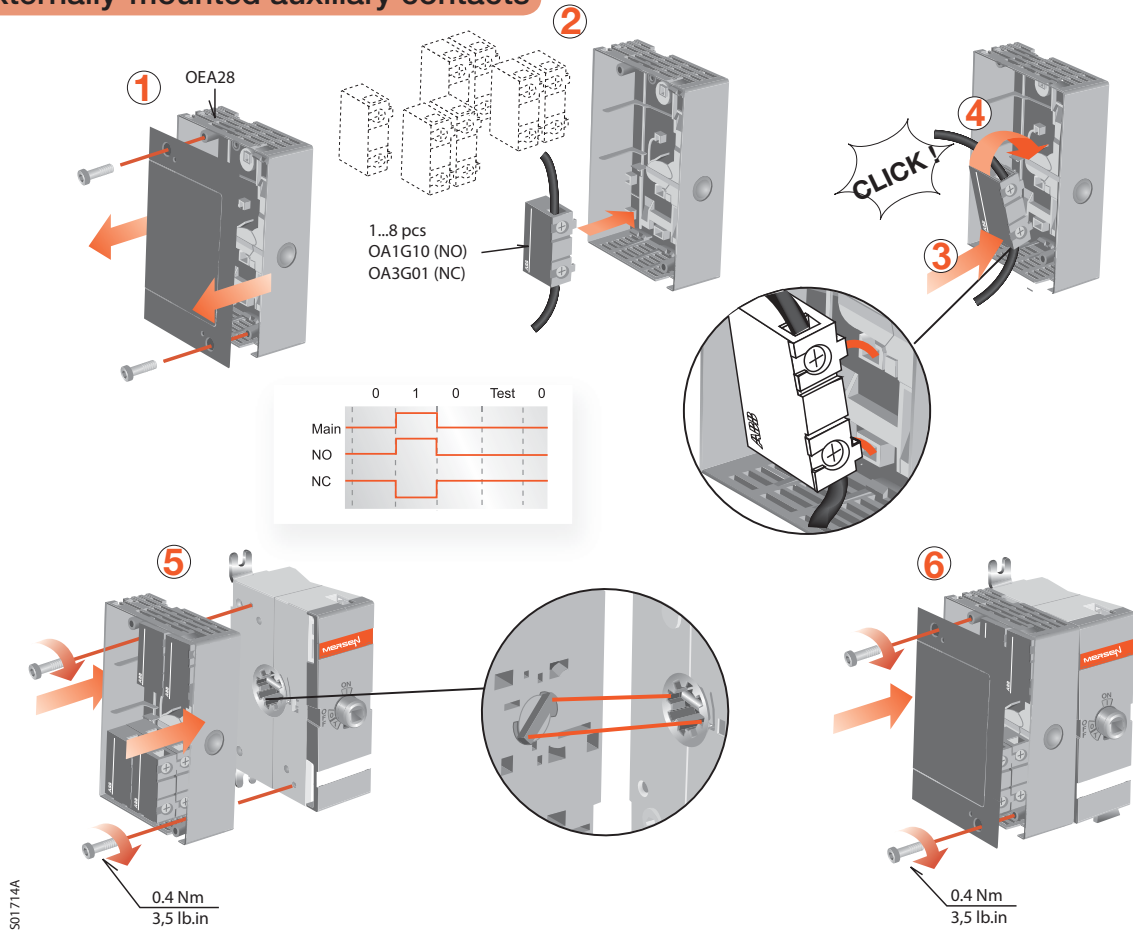


Height	Width	Depth
406 mm	x 255 mm	x 152 mm
16 in	x 10 in	x 6 in

A	B	D
0	13 mm 0.5 in	13 mm 0.5 in

C Cable size	
AWG	
4-3	100 mm 4 in
2	100 mm 4 in
1	100 mm 4 in
1/0	125 mm 5 in
2/0	150 mm 6 in
3/0-4/0	175 mm 7 in
MCM	
250	200 mm 8 in
300	250 mm 10 in

Externally-mounted auxiliary contacts





ep.mersen.com