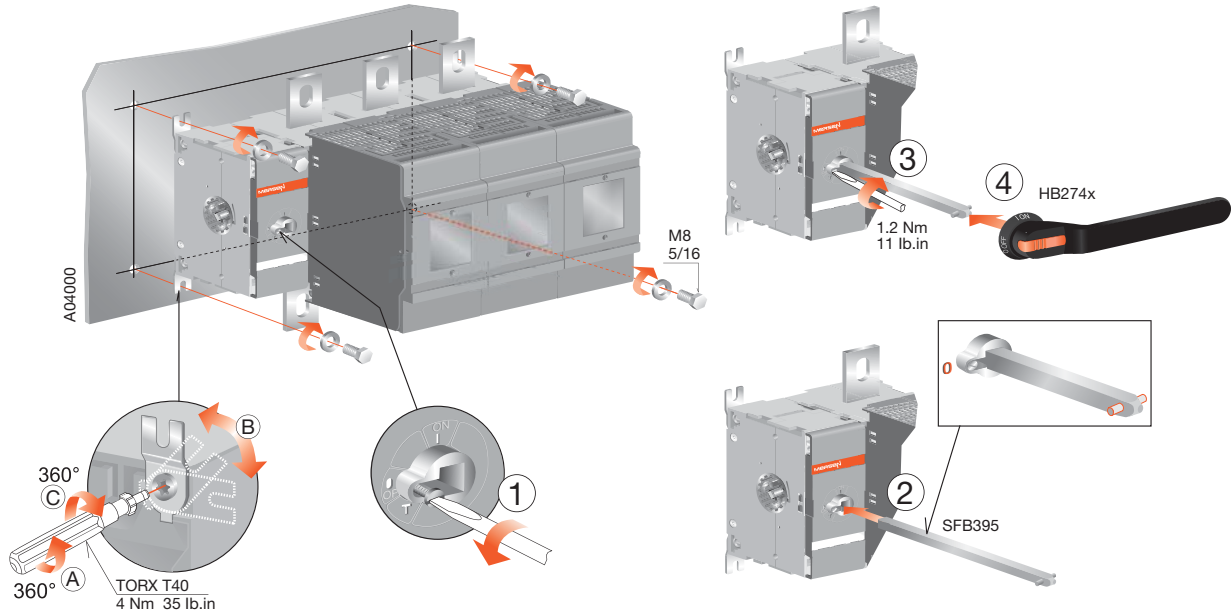


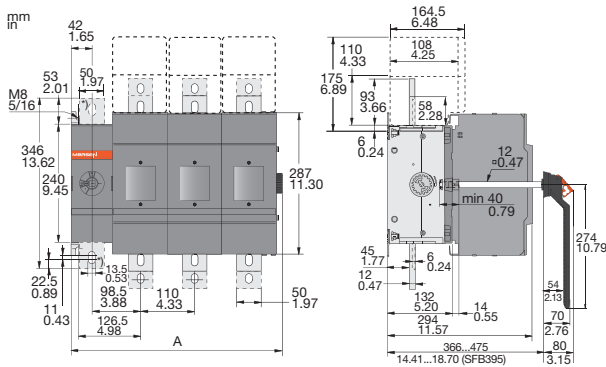
M1200-1250x Fused

Document no. 34M1200-1250F-A

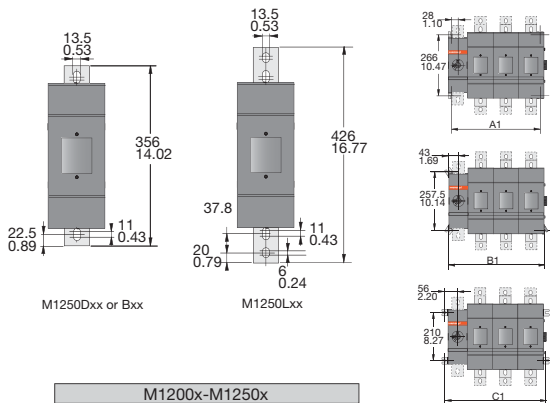
M1200-1250x Fused



For DIN, BS and L Fuse Types with gearbox on the side

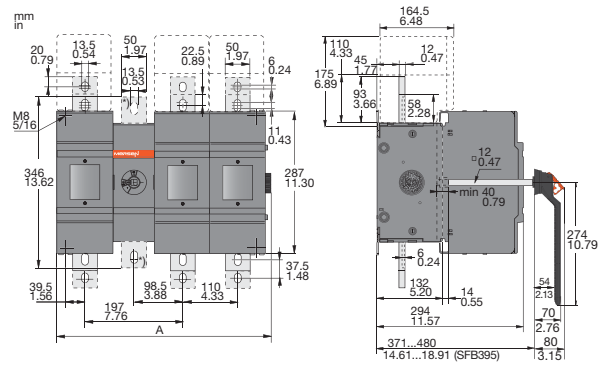


*) Neutral pole

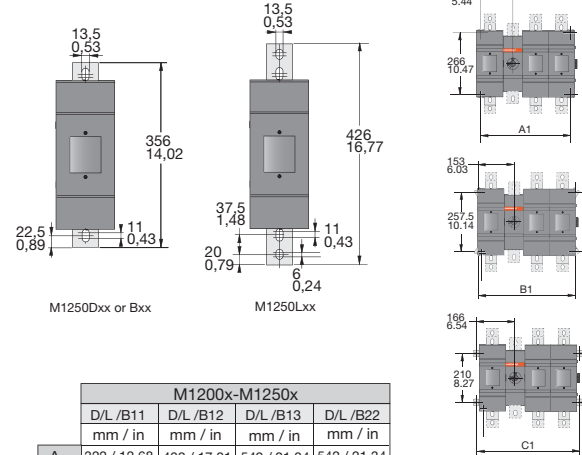


	M1200x-M1250x			
	D/L /B01	D/L /B02	D/L /B03	D/L /B04
	mm / in	mm / in	mm / in	mm / in
A	209 / 8.23	319 / 12.56	429 / 16.89	539 / 21.22
A1	166 / 6.54	276 / 10.87	386 / 15.20	496 / 19.53
B1	196 / 7.72	306 / 12.05	416 / 16.38	526 / 20.71
C1	222 / 8.74	332 / 13.07	442 / 17.40	552 / 21.73

For DIN, BS and L Fuse Types with gearbox in the middle



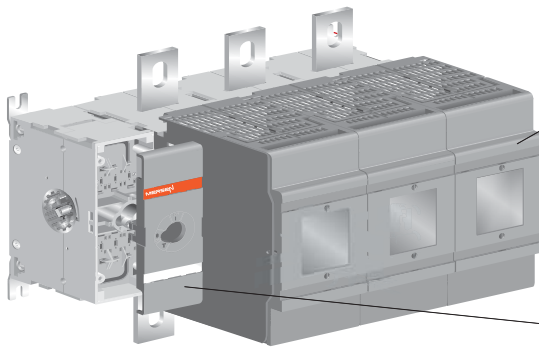
*) Neutral pole



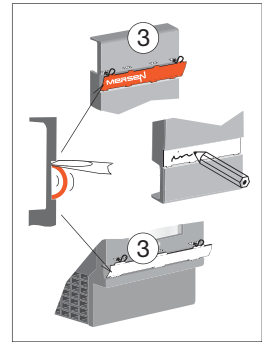
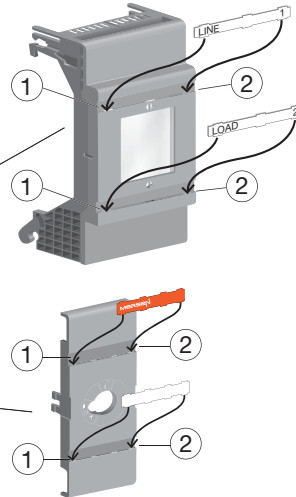
	M1200x-M1250x			
	D/L /B11	D/L /B12	D/L /B13	D/L /B22
	mm / in	mm / in	mm / in	mm / in
A	322 / 12.68	432 / 17.01	542 / 21.34	542 / 21.34
A1	276 / 10.87	386 / 15.20	496 / 19.53	496 / 19.53
B1	306 / 12.05	416 / 16.38	526 / 20.71	526 / 20.71
C1	322 / 13.07	442 / 17.40	552 / 21.73	552 / 21.73

M1200-1250x Fused

Label

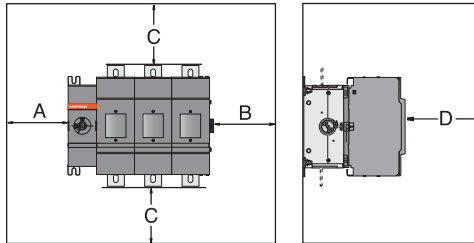


AG4002



Clearances per UL98

A	B	D
0	13 mm 0.5 in	13 mm 0.5 in



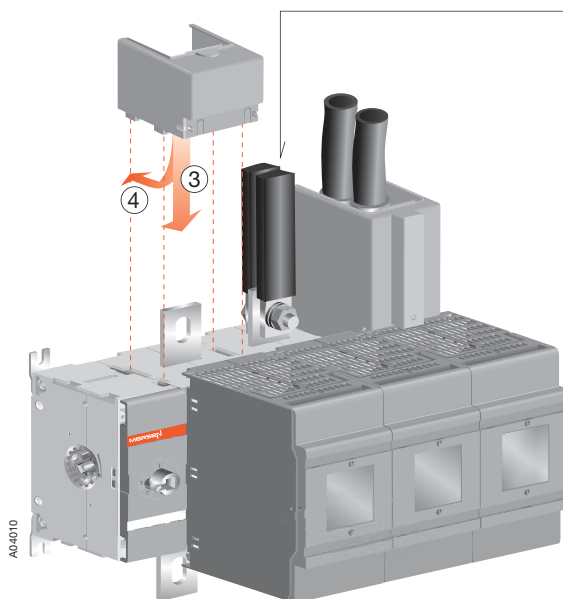
Minimum enclosure size or equivalent volume

Switch	Height mm/in	Width mm/in	Depth mm/in
M1200Lxx	1200	750	400

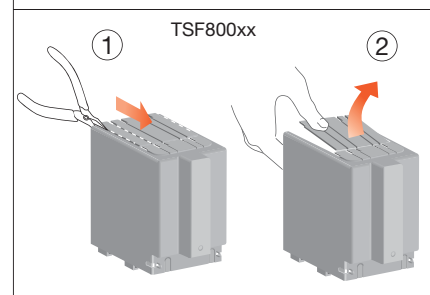
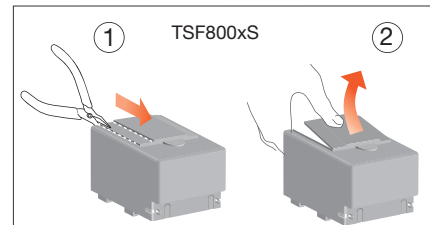
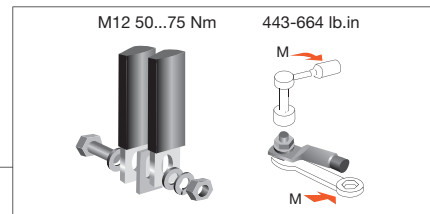
AG4008

C Cable size	
AWG	MCM
2	250
100 mm 4 in	200 mm 8 in
1	300
100 mm 4 in	250 mm 10 in
1/0	350
125 mm 5 in	300 mm 12 in
2/0	400
150 mm 6 in	330 mm 13 in
3/0-4/0	500
175 mm 7 in	356 mm 14 in
	600
	381 mm 15 in

Terminal Shrouds

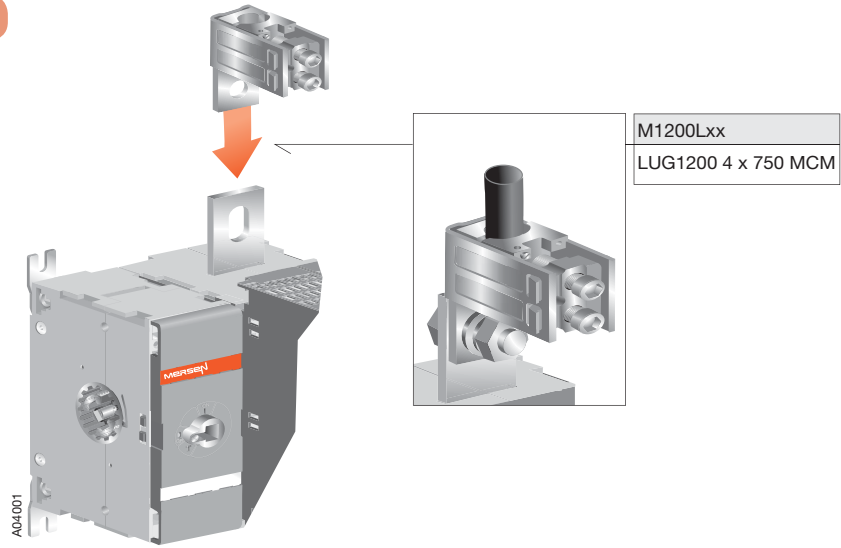


AG4010



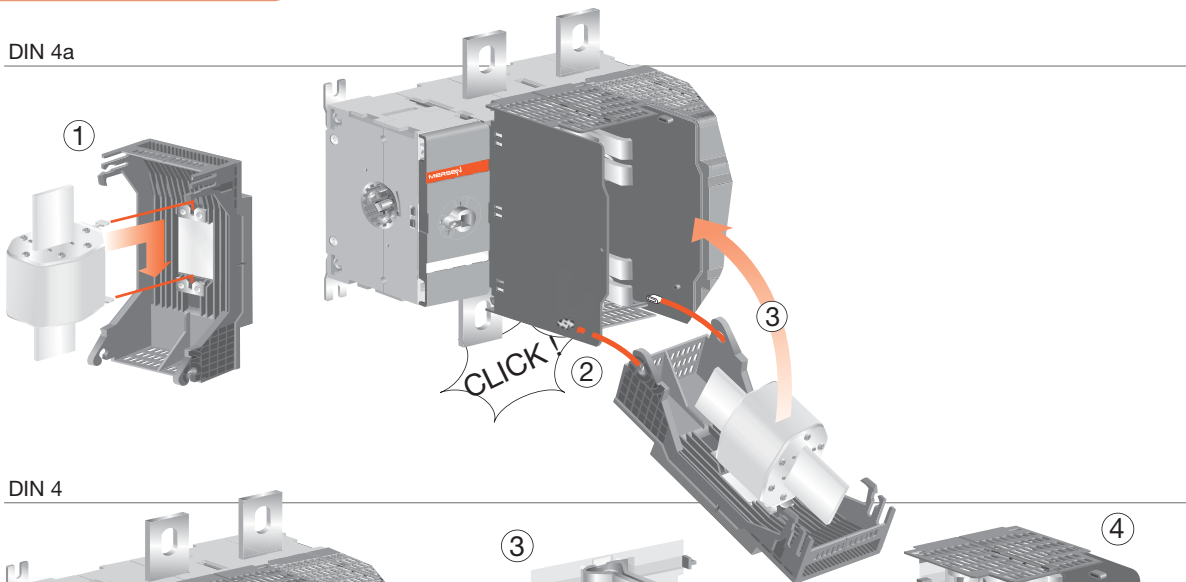
M1200-1250x Fused

Lugs

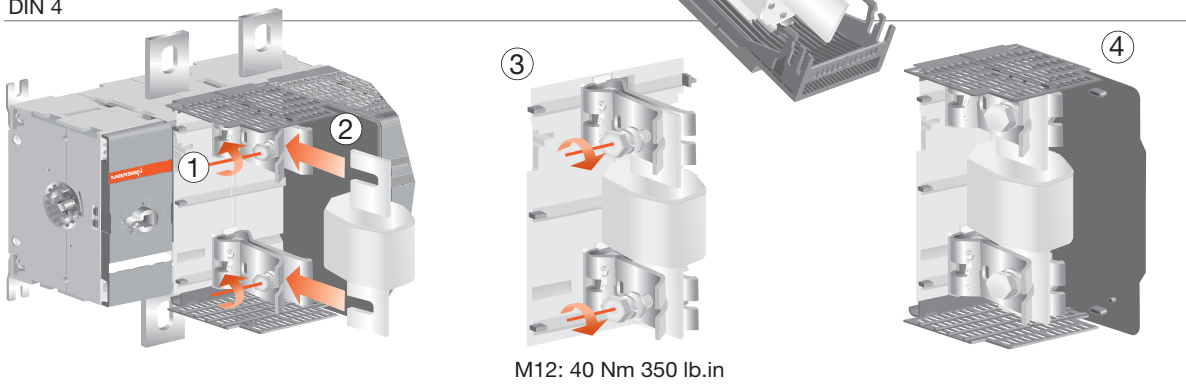


Fuse links

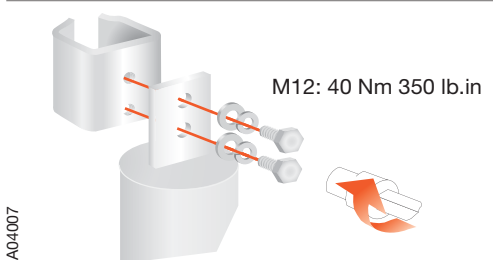
DIN 4a



DIN 4

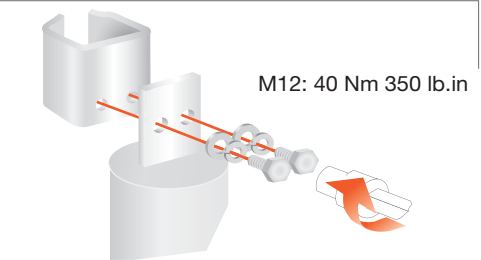


L



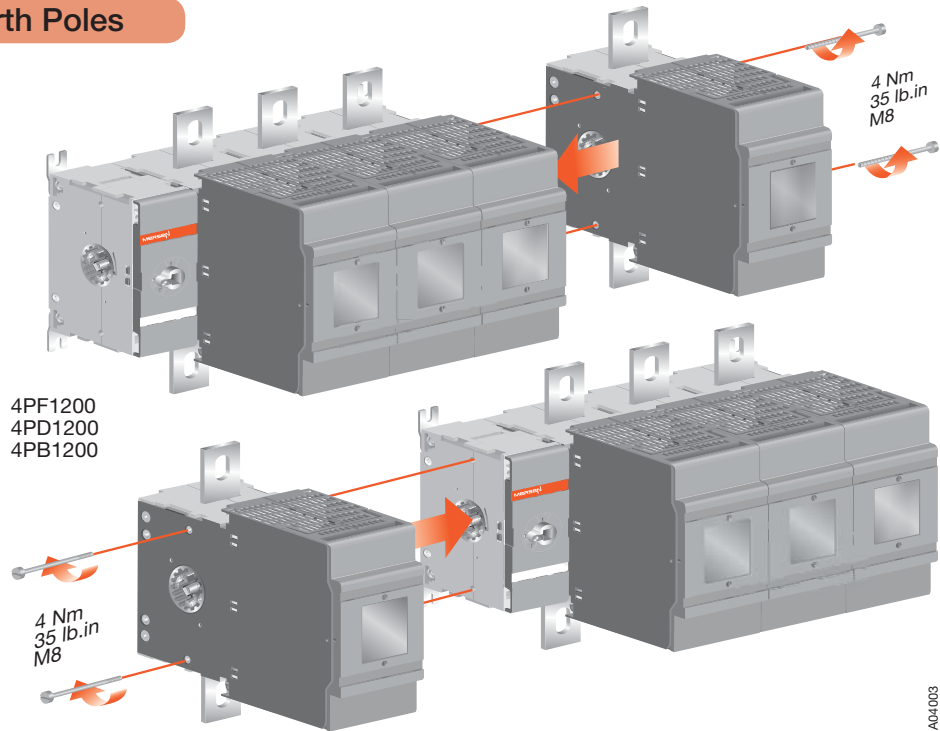
AO4007

BS

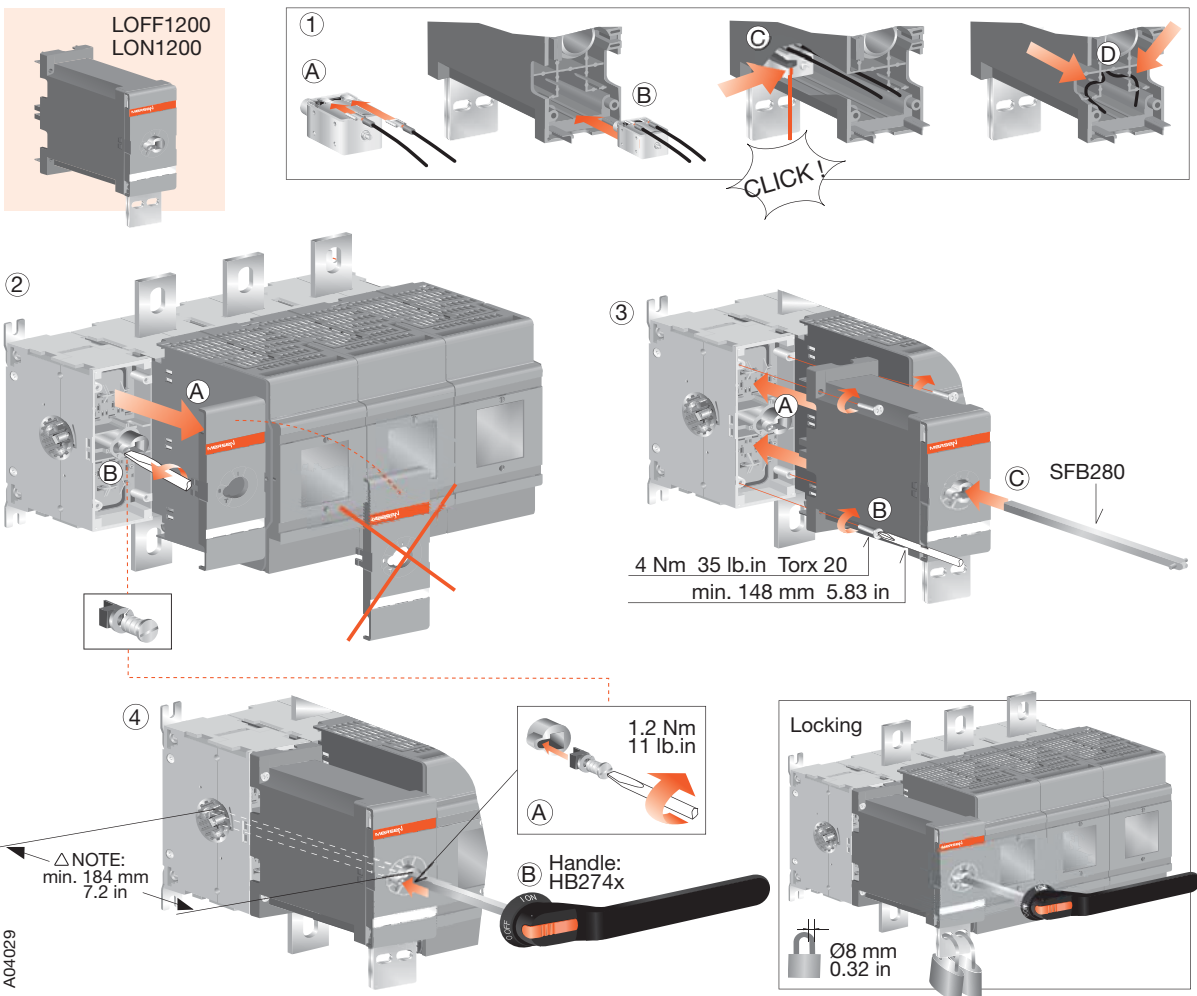


M1200-1250x Fused

Fourth Poles

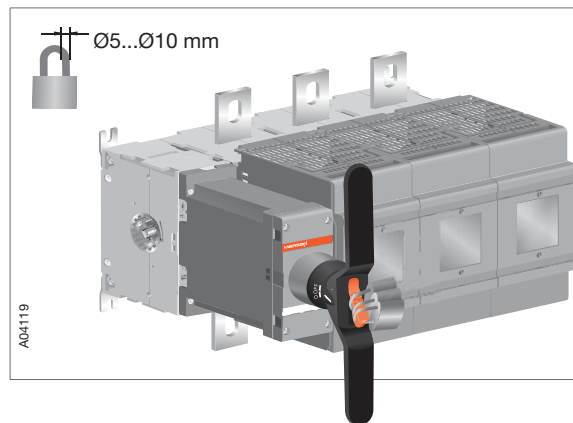
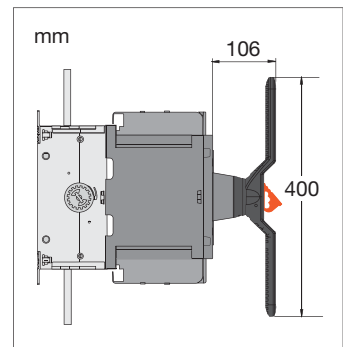
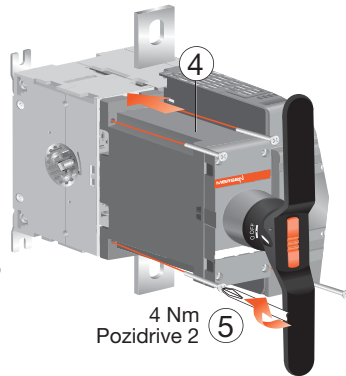
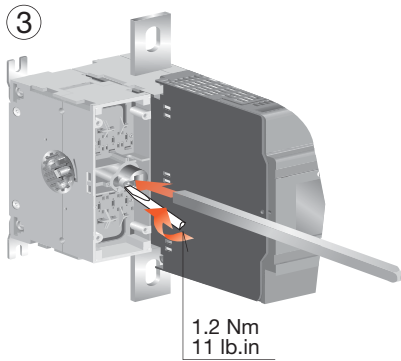
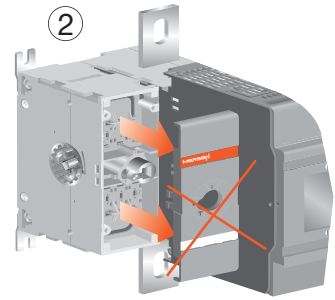
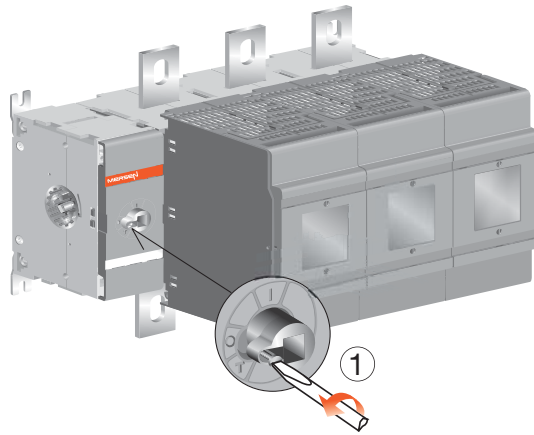
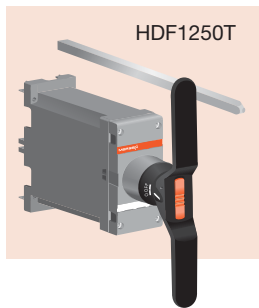


Locking Mechanism

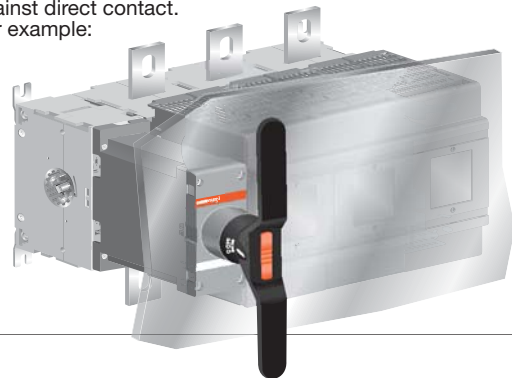


M1200-1250x Fused

Direct-mounted Handle

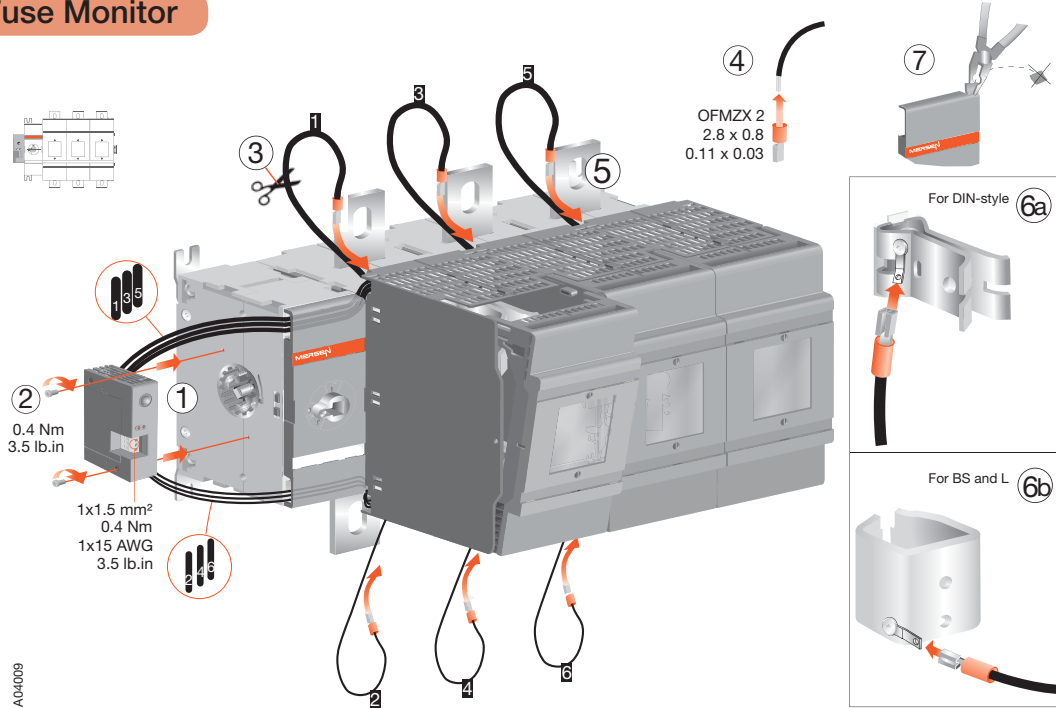


Note: Use protection against direct contact. For example:

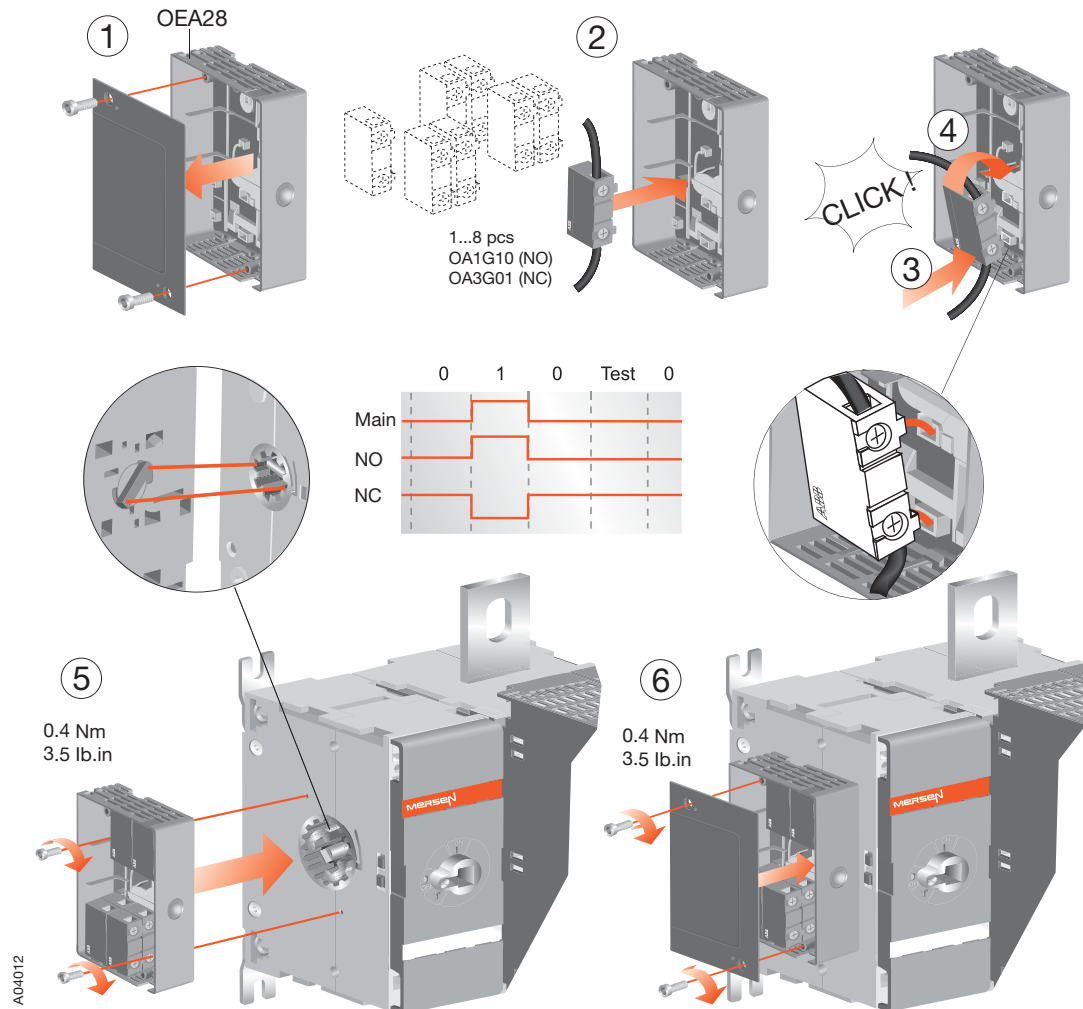


M1200-1250x Fused

Fuse Monitor

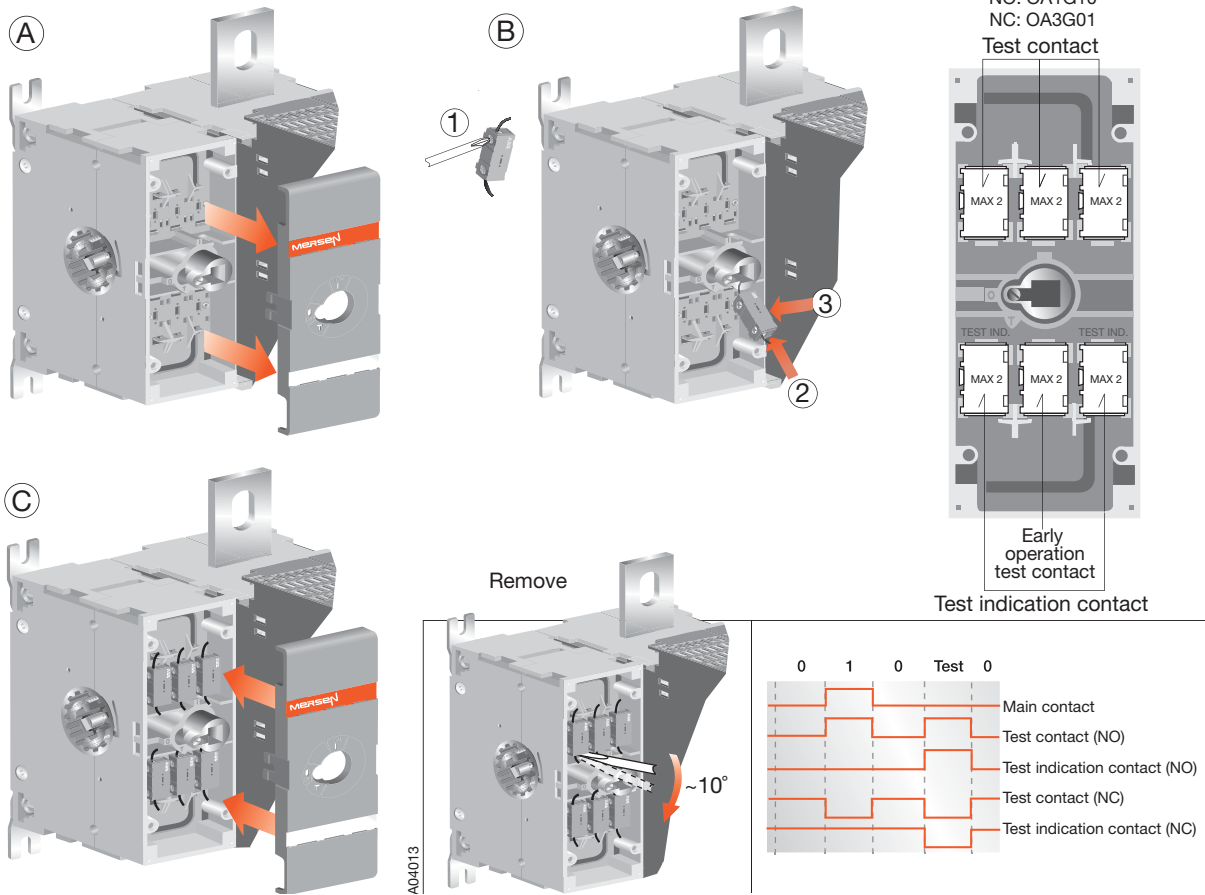


Externally-mounted Auxiliary Contacts

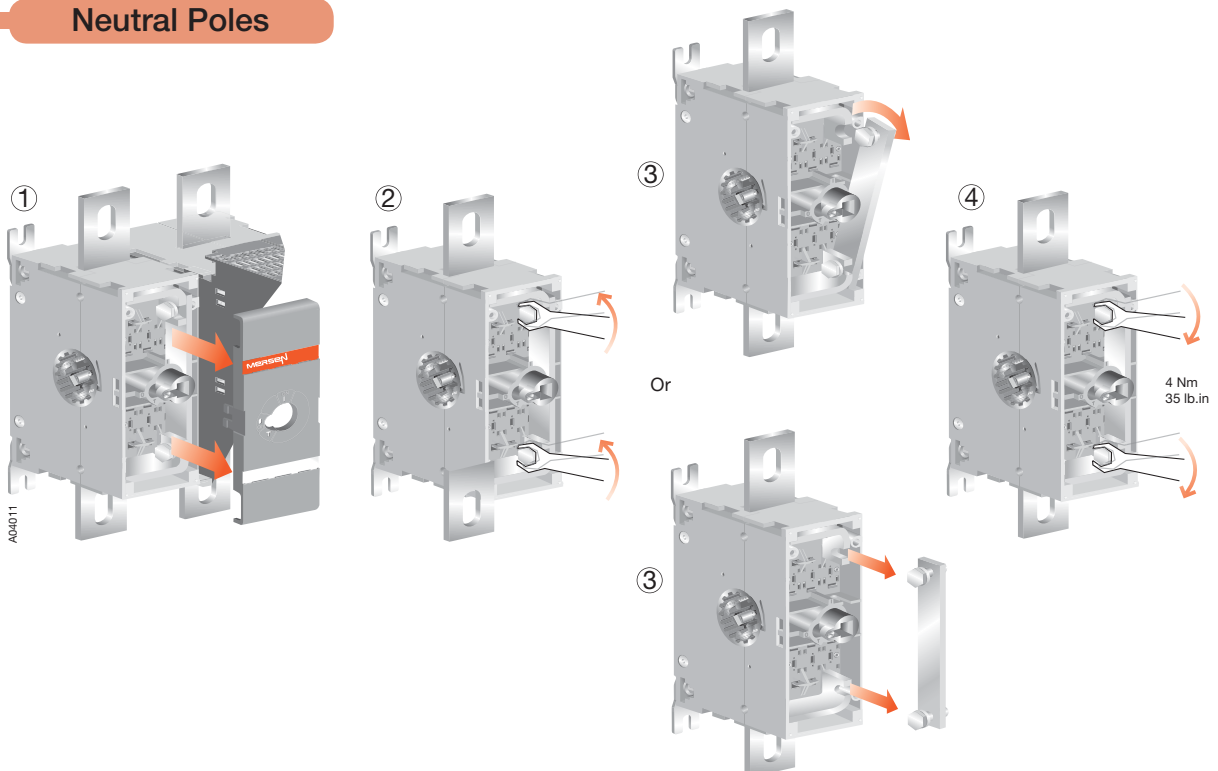


M1200-1250x Fused

Internally-mounted Auxiliary Contacts



Neutral Poles





ep.mersen.com