

# Food and Beverage

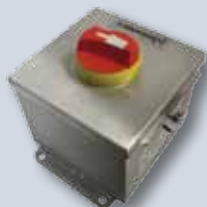
Electrical Power Components  
for the Food and Beverage Industry

LINE CARD

*MERSEN'S  
Electrical Protection  
components  
are there to  
protect you.*



# Electrical Power Components for the Food and Beverage Industry



## Enclosed Disconnect Switches

- Line-of-sight disconnect switch
- Stainless Steel NEMA 4X for harsh environments
- Rugged polycarbonate handle accommodates 3 padlocks



## UltraSafe™ Fuseholders

- Touch-safe fuseholders for UL class CC, J, and Midget; IEC 10x38, 14x51, 22x58 and 27x60mm fuses
- Tool-free fuse installation



## Finger-Safe Power Distribution Blocks

- IP20 touch-safe distribution of power and control circuit conductors
- Compact, DIN-rail mount, modular design for enhanced user flexibility



## Medium Voltage Fuses

- Available up to 38kV for transformer, motor, or capacitor protection in all mounting styles



## Surge-Trap®

- Patented TPMOV® technology guarantees fail-safe operation
- No additional overcurrent protection required providing substantial cost savings and reduced installation time



## Open-Style Fuse Blocks

- Fuse blocks for all UL classes including J, CC, H, K, R, G, T and Midget
- Choose between screw, pressure plate and box connector wire terminals



## Amp-Trap 2000®

- Current limiting, arc flash mitigating
- Time-delay for motor starting and transformer inrush
- Available in UL class CC, RK1, J and L



## Open-Style Power Distribution Blocks

- UL Listed for both feeder and branch circuit applications
- Adder pole design increase flexibility and ease-of-use



## Miniature (Glass) Fuses

- Glass and ceramic body fuses for smaller electrical system components
- Axial leads optional



## High-Speed Class J Fuses

- The High Speed Class J (HSJ series) combines the low I<sup>2</sup>t of a semiconductor fuse and the branch-circuit performance of a class J UL Listed fuse into a single design

**MERSEN**  
Expertise, our source of energy

## A WORLD LEADER in electrical power.

A global expert in materials and solutions for extreme environments as well as in the safety and reliability of electrical equipment, Mersen designs innovative solutions to address its clients' specific needs to enable them to optimize their manufacturing process in sectors such as energy, transportation, electronics, chemical, pharmaceutical, and process industries.

BR-FOODBEV-001 | 04.14 | PDF | © Mersen 2014

MERSEN U.S.A.  
374 Merrimac Street  
Newburyport, MA 01950  
U.S.A.  
T : 978 462 6662  
F : 978 462 0181

MERSEN France  
15 Rue Jacques de Vaucanson  
F-69720 Saint Bonnet de Mure  
France  
T : +33 (0)4 72 22 66 11  
F : +33 (0)4 72 22 67 13

MERSEN Toronto  
6200 Kestrel Road  
Mississauga, Ontario  
Canada L5T 1Z1  
T : 416 252 9371  
F : 416 252 6572

MERSEN Shanghai  
No.55-A6. Shu Shan Road  
Songjiang 201611  
Shanghai  
Tel: +8621 67602388