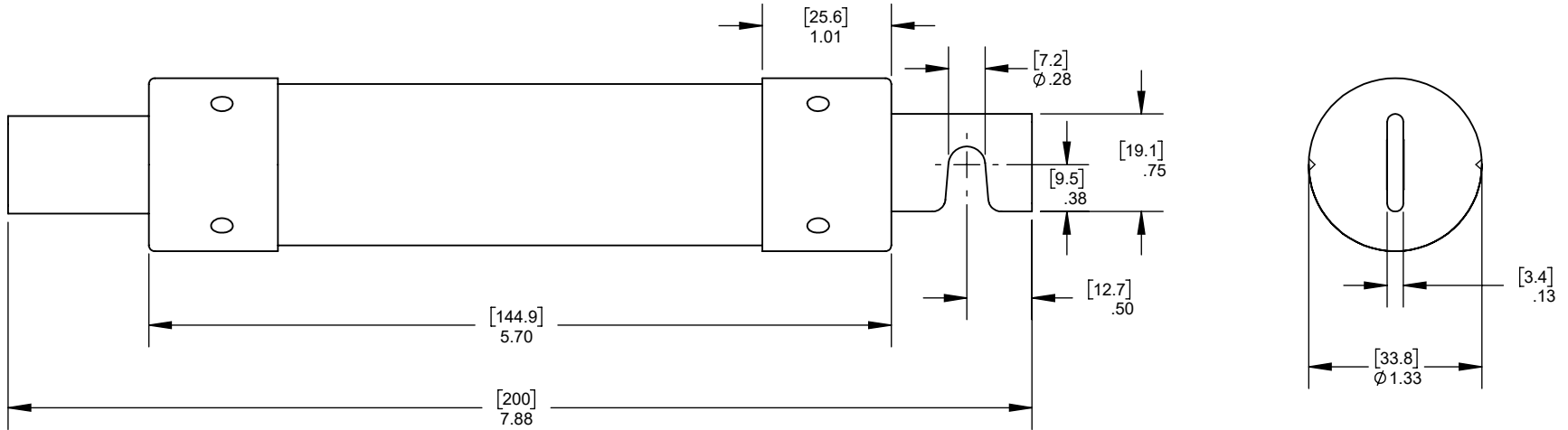
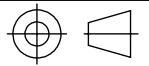


REV.	DATE	ECO	DESCRIPTION	BY	CK	APP
A	7/25/2007	N/A	REDRAWN ON NEW FORMAT - WAS ON 17453 REV -, REMOVED A6D(110-600)R AND A2D (70-600)R	LDB	NA	NA
B	3/10/2022	16419	ADDED A6D(70-100)RN, REDRAWN FROM CADRA AND UPDATED TITLE BLOCK	ABT	N/A	N/A



Approval stage / Etat d'approbation: APPROUVÉ POUR FABRICATION / APPROVED FOR MANUFACTURING	Product Class: / Product Type:	CLASS RK1	TIME DELAY
	Product amp rating: / Voltage rating:	70-100A	600V
Initial ECO / ECO intiale:	ECO-16419-000	Title / Titre:	
Draw by / Dessiné par: Yadyra Fang	Date : 3/14/2022	OUTLINE	
Checked by / Vérifié par: Alma Balcazar	Date : 3/14/2022		
Electrical Power 374 MERRIMAC STREET NEWBURYPORT, MA 01950	Éch / Scale : 3:4 Format / Size : A	Part / Article: 17453	Page : 1/1
		MERSEN	

Weight : 0.25
Masse : .25



Rev : **B**
Rév :

* DIMENSIONS IN [] ARE IN MILLIMETERS
OUTLINE DIMENSIONS NOT TO BE USED FOR PRODUCTION.

A6DRN
A6DR
CATALOG NUMBER

Ce plan strictement confidentiel est la propriété exclusive de la société MERSEN sans l'autorisation écrite de laquelle il ne peut être ni reproduit, ni copié, ni communiqué à des tiers.
This drawing and specifications there on is property of MERSEN and shall not be reproduced or copied or used in whole or in part as the base for manufacture or sale of item without written permission.