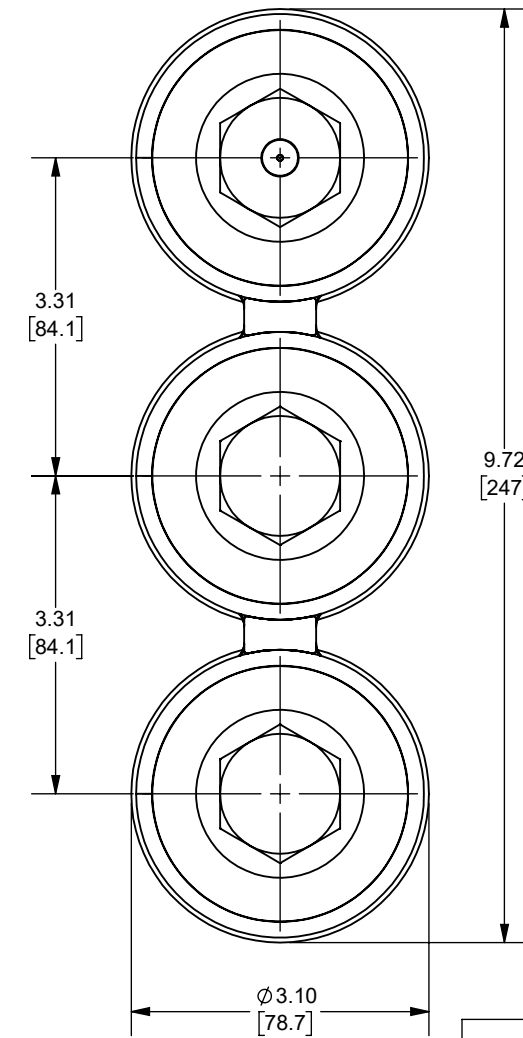
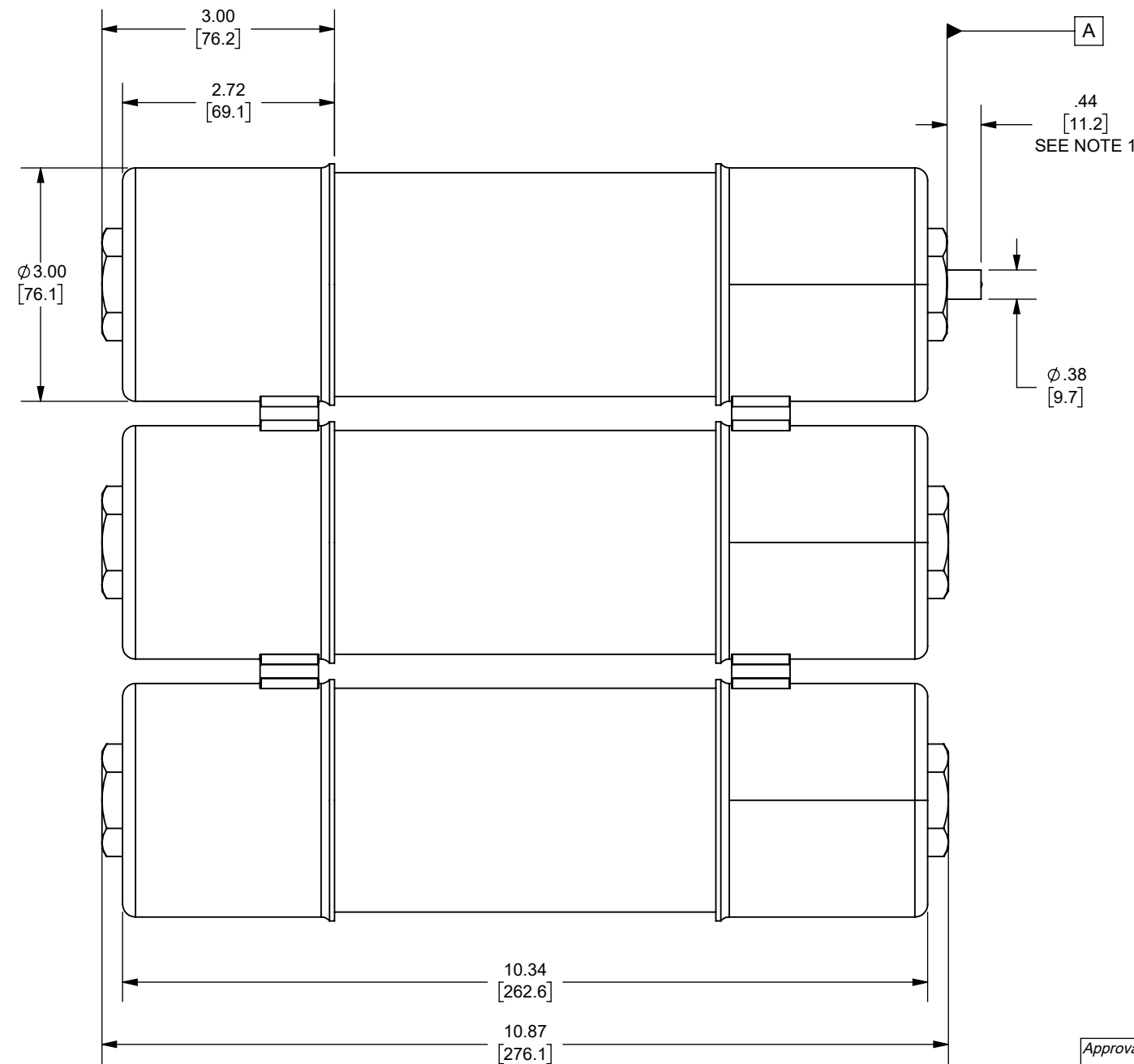


REV.	DATE	ECO	DESCRIPTION	BY	CK	APP
D	1/31/2006	N/A	REDRAWN WAS ON 16422 REV C REMOVED A240R30R	LDB	N/A	N/A
E	1/3/2024	18032	REDRAWN FROM CADRA, ADDED NOTES, UPDATED TITLE BLOCK, DIM .44 [11.2] WAS 50 [12.7], 1 LB FORCE WAS 2LB FORCE	YF	N/A	SEE ECO



OUTLINE DIMENSIONS  
NOT TO BE USED FOR PRODUCTION DIMENSIONS IN [ ]  
ARE MILLIMETERS

NOTES:

- INDICATOR IS FLUSH WITH SURFACE [A] BEFORE FUSE OPENS  
INDICATOR EXTENDS .44 IN. [11.2mm] AFTER FUSE OPENS AND EXERTS  
AN 1 LBF AT THE END OF TRAVEL

Approval stage / Etat d'approbation: <b>APPROUVÉ POUR FABRICATION / APPROVED FOR MANUFACTURING</b>	Product Class:/ Product Type: <b>MEDIUM VOLTAGE R-RATED FUSE</b>	Product amp rating:/ Voltage rating: <b>36R 2.75kV</b>
Initial ECO / ECO initiale: <b>ECO-18032-000</b>	Title / Titre: <b>OUTLINE A240R36R</b>	Weight : Masse :
Draw by / Dessiné par: <b>Yadyra Fang</b>	Date : <b>6/14/2024</b>	
Checked by / Vérifié par: <b>Luis ARMENTA</b>	Date : <b>6/14/2024</b>	
Electrical Power 374 MERRIMAC STREET NEWBURYPORT, MA 01950	Éch / Scale : <b>1:2</b> Format / Size : <b>B</b>	Part / Article: <b>SEE TABLE</b>
Page : <b>1/1</b>		<b>MERSEN</b>

Ce plan strictement confidentiel est la propriété exclusive de la société MERSEN sans l'autorisation écrite de laquelle il ne peut être ni reproduit, ni copié, ni communiqué à des tiers.  
This drawing and specifications there on is property of MERSEN and shall not be reproduced or copied or used in whole or in part as the base for manufacture or sale of item without written permission.

A240R36R  
CATALOG  
NUMBER