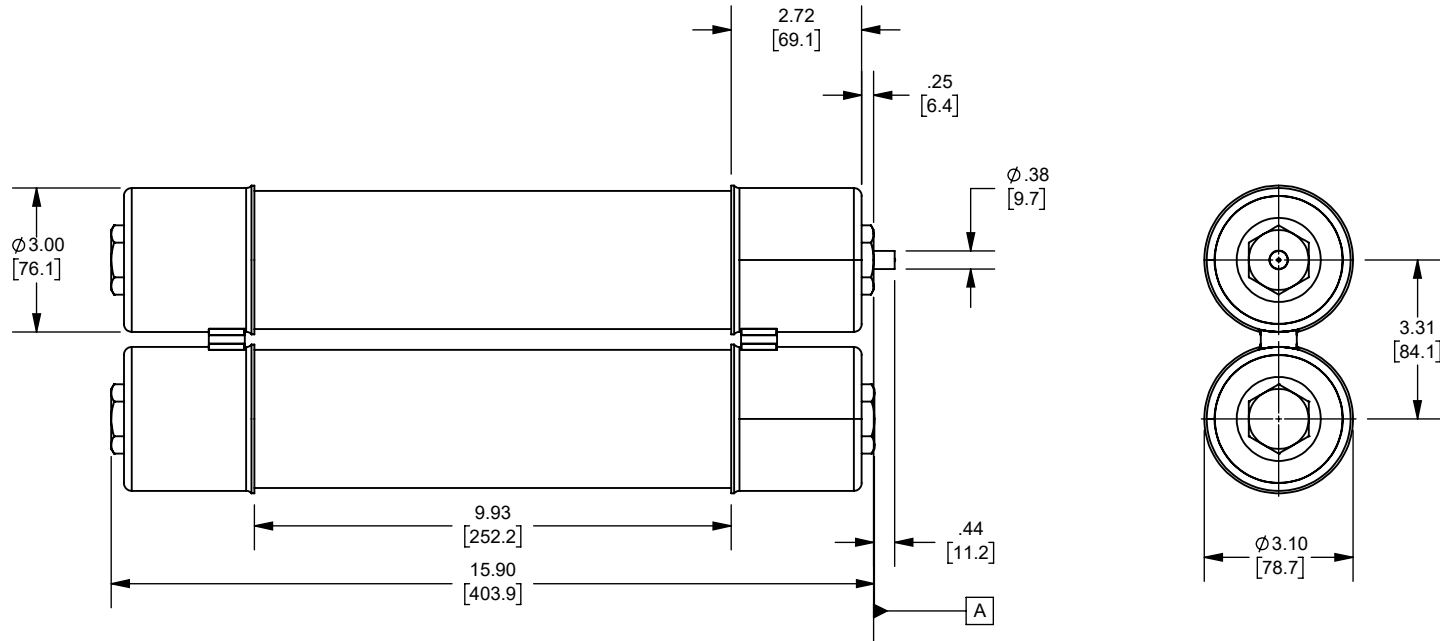


REV.	DATE	ECO	DESCRIPTION	BY	CK	APP
-	1/18/2024	18032	UPDATED TITLE BLOCK, DIM .44[11.2] WAS .50[12.7], 1 LBS FORCE WAS 2 LBS FORCE	YF	N/A	SEE ECO



OUTLINE DIMENSIONS
NOT TO BE USED FOR PRODUCTION

DIMENSIONS IN []
ARE MILLIMETERS

NOTES:

- INDICATOR FLUSH WITH SURFACE **A** BEFORE FUSE OPENS. INDICATOR EXTENDS .44 [11.2mm] AFTER FUSE OPENS. INDICATOR EXERTS 1 LBS FORCE AT END OF TRAVEL.

Approval stage / Etat d'approbation: APPROUVÉ POUR FABRICATION / APPROVED FOR MANUFACTURING		Product Class:/ Product Type: MEDIUM VOLTAGE CS-3	
		Product amp rating:/ Voltage rating: 250-450E 5.5kV	
Initial ECO / ECO intiale: ECO-18032-000		Title / Titre: OUTLINE	
Draw by / Dessiné par: Yadyra Fang		Date : 1/18/2024	
Checked by / Vérifié par: Luis ARMENTA		Date : 6/13/2024	
Electrical Power 374 MERRIMAC STREET NEWBURYPORT, MA 01950		Éch / Scale : 1:4 Format / Size : A	
		Part / Article: SEE TABLE	
		Page : 1/1	
		MERSEN	

A055F2DTR0-450E
A055F2DTR0-400E
A055F2DTR0-350E
A055F2DTR0-300E
A055F2DTR0-250E
CATALOG NUMBER

Ce plan strictement confidentiel est la propriété exclusive de la société MERSEN sans l'autorisation écrite de laquelle il ne peut être ni reproduit, ni copié, ni communiqué à des tiers.
This drawing and specifications there on is property of MERSEN and shall not be reproduced or copied or used in whole or in part as the base for manufacture or sale of item without written permission.